

SOLANO COUNTY WATER AGENCY



BOARD OF DIRECTORS MEETING

BOARD OF DIRECTORS:

Chair:

Director Dale Crossley
Reclamation District No. 2068

Vice Chair:

Supervisor Erin Hannigan
Solano County District 1

Mayor Len Augustine
City of Vacaville

Mayor Jack Batchelor
City of Dixon

Mayor Osby Davis
City of Vallejo

Director John D. Kluge
Solano Irrigation District

Mayor Elizabeth Patterson
City of Benicia

Mayor Harry Price
City of Fairfield

Mayor Norm Richardson
City of Rio Vista

Director Gene Robben
Maine Prairie Water District

Mayor Pete Sanchez
City of Suisun City

Supervisor Linda Seifert
Solano County District 2

Supervisor Jim Sperring
Solano County District 3

Supervisor Skip Thomson
Solano County District 5

Supervisor John Vasquez
Solano County District 4

INTERIM GENERAL MANAGER:

Thomas L. Pate, PE
Solano County Water Agency

DATE: Thursday, June 11, 2015

TIME: 6:30 p.m.

PLACE: Berryessa Room
Solano County Water Agency Office
810 Vaca Valley Parkway, Suite 203
Vacaville

1. CALL TO ORDER

2. PLEDGE OF ALLEGIANCE

3. APPROVAL OF AGENDA

4. PUBLIC COMMENT

Limited to 5 minutes for any one item not scheduled on the Agenda.

5. CONSENT ITEMS

(A) Minutes: Approval of the Minutes of the Board of Directors meeting of May 14, 2015 is recommended.

(B) Expenditure Approvals: Approval of the May checking account register is recommended.

(C) Pre-Approval of Fiscal Year 2015-2016 Payments: Pre-approval of specified categories of bills for fiscal year 2015 – 2016 is recommended.

(D) Statement of Investment Policy: Approval of the annual Statement of Investment Policy is recommended.

(E) Appropriations Limit: Approval of appropriations limit for fiscal year 2015 – 2016 is recommended.

810 Vaca Valley Parkway, Suite 203
Vacaville, California 95688
Phone (707) 451-6090 • FAX (707) 451-6099
www.scwa2.com



(F) Mitigated Negative Declaration for the NAWCA 3 – Lower Putah Creek Floodplain Restoration Project: Adopt Mitigated Negative Declaration for Lower Putah Creek Coordinating Committee's (LPCCC) North American Wetlands Conservation Act 3 – Lower Putah Creek Floodplain Restoration project. This project is funded by the LPCCC and a Federal grant.

(G) Amendment No. 2 to the Agreement with Yolo Resource Conservation District: Authorize Interim General Manager to execute Amendment No. 2 to the Agreement with Yolo Resource Conservation District to assist the Coordinating Committee with implementation of the Westside Integrated Regional Water Management Plan (Westside IRWMP). Increase contract amount by \$12,380.22 from \$25,525.79 to \$37,906.01.

(H) Purchase from Campbell Scientific of replacement water quality and monitoring equipment for PSC and NBA: Authorize the Interim General Manager to execute a Purchase Order for replacement water quality and monitoring instrumentation for the Putah South Canal and North Bay Aqueduct. The combined total cost of these purchases is \$30,578.94 without shipping.

(I) Flood Control Advisory Committee Appointment: Approve appointing Steve Hartwig, Director of Public Works, City of Vacaville, to the Flood Control Advisory Committee as a representative of the Solano County Water Agency Advisory Commission. The appointment would take the place of the retired Rolf Ohlemutz.

6. BOARD MEMBER REPORTS

RECOMMENDATION: For information only.

7. GENERAL MANAGER'S REPORT

RECOMMENDATION: For information only.

8. SCWA BUDGET FOR FISCAL YEAR 2015-2016

RECOMMENDATION: Hear report from Staff and recommendation from the Executive Committee, acting as the Budget Review Committee, and consider adoption of the Water Agency's fiscal year 2015-2016 budget.

9. BUDGET IMPLEMENTATION ACTIONS

(A) State Water Project Tax Rate for Fiscal Year 2015-2016: Establish a tax rate of \$0.02 per \$100 of assessed valuation for the State Water Project property tax for fiscal year 2015-2016.

(B) Cost of living Adjustment for Water Agency Employees: Award of a 2% cost of living adjustment to Water Agency employees effective the payroll period starting July 5, 2015 as recommended by the Executive Committee. The cost of a 2% COLA is approximately \$25,894 for FY 15/16.

(C) Consultant Services Contracts and Renewals: Authorize Interim General Manager to execute agreements and amendments for the following consultant services for work through fiscal year 2015 – 2016:

1. Agrichem, Nuisance Vegetation Management, new contract- contract limit of \$31,744;
2. Blankinship & Associates, Inc., Compliance and Monitoring for Aquatic Pesticide Use, new contract - contract limit of \$47,000;
3. Byro Technologies LLC, NBA Biofilm Screening Tests, new contract – contract limit of \$67,320;
4. CH2MHILL, Solano HCP EIR/EIS, new contract -contract limit \$90,000;
5. Clean Lakes, Campbell Lake Algaecide Treatments, new contract-contract limit of \$86,040;
6. Erler & Kalinowski, Inc., Baseline Water Use Assessment, new contract – contract limit of \$55,000;
7. Eyasco, Inc., Data and Website Management, new contract- contract limit of \$214,660;
8. GHD, Solano County Commercial and Industrial Water Conservation, two year contract- contract limit of \$160,000;
9. GHD, Solano County Water Savings Incentive Program Administration, two year contract – contract limit of \$60,000;
10. IN Communications, High School Video Contest and Public Outreach, new contract – contract limit of \$30,000;
11. Iron Springs Corporation, Large Landscape BMP, new contract – contract limit of \$50,000;
12. LSA Associatesn Inc., Habitat Conservation Plan, new contract-contract limit of \$335,360;
13. Solano Resource Conservation District, Lake Berryessa Outreach, new contract-contract limit of \$85,000;
14. Solano Resource Conservation District, Barker Slough Watershed Partnership, new contract – contract limit of \$50,000;
15. Solano Resource Conservation District, Suisun Marsh Education Program, three year contract – contract limit of \$137,500.
16. Southwest Environmental, Inc., high-efficiency toilet installation program, new contract - contract limit \$200,000;
17. Terraphase, Cache Slough Water Quality Monitoring, new contract- contract limit \$50,000;
18. Wildlife Survey & Photo Service, Solano Project Biomonitoring for Aquatic Invasive Species, new contract-contract limit of \$156,949;
19. Yolo Resource Conservation District, Westside IRWMP Implementation Assistance, new-contract-contract limit \$47,417;
20. ZunZun, Solano School Education Program, new contract- contract limit of \$35,000.

- (D) Purchase new vehicle and heavy equipment: Authorize the Interim General Manager to execute a Purchase Order for the following:

1. Agency Fleet Vehicle (Chevrolet Tahoe) costing \$37,860.
2. Backhoe Loader (John Deere 710K) costing \$183,470.

10. PUTAH SOUTH CANAL HEADWORKS IMPROVEMENTS & MODIFICATIONS

RECOMMENDATIONS:

1. Hear staff presentation.
2. Authorize Interim General Manager to execute an agreement with the lowest responsible bidder for the Putah South Canal Headworks Improvements & Modifications project. The Engineers Estimate for the Putah South Canal Headworks Improvements & Modifications project is \$1,501,090 and Program funding is allocated in the Solano Project Reserves in the Fiscal Year 2015-2016.

11. WATER POLICY UPDATES

RECOMMENDATIONS:

1. Hear report from staff on current and emerging Delta and Water Policy issues and provide direction.
2. Hear report from Supervisor Thomson on activities of the Delta Counties Coalition and Delta Protection Commission.
3. Hear status report from the SCWA Water Policy Committee.
4. Hear report from Legislative Committee.

12. TIME AND PLACE OF NEXT MEETING

NOTE: The July 9, 2015 SCWA Board of Directors meeting is cancelled.

The next regularly scheduled Board meeting will be Thursday, August 13, 2015 at 6:00 p.m. at the SCWA offices, preceding the City-County Coordinating Committee meeting.

The Full Board of Directors packet with background materials for each agenda item can be viewed on the Agency's website at www.scwa2.com.

Any materials related to items on this agenda distributed to the Board of Directors of Solano County Water Agency less than 72 hours before the public meeting are available for public inspection at the Agency's offices located at the following address: 810 Vaca Valley Parkway, Suite 203, Vacaville, CA 95688. Upon request, these materials may be made available in an alternative format to persons with disabilities.

CONSENT ITEMS

SOLANO COUNTY WATER AGENCY
BOARD OF DIRECTORS MEETING MINUTES

MEETING DATE: May 14, 2015

The Solano County Water Agency Board of Directors met this evening at the Solano County Water Agency. Present were:

Supervisor Erin Hannigan, Solano County District 1
Supervisor Linda Seifert, Solano County District 2
Supervisor Jim Spering, Solano County District 3
Supervisor John Vasquez, Solano County District 4
Mayor Len Augustine, City of Vacaville
Mayor Pete Sanchez, City of Suisun City
Mayor Elizabeth Patterson, City of Benicia
Mayor Osby Davis, City of Vallejo
Mayor Jack Batchelor, City of Dixon
Mayor Harry Price, City of Fairfield
Director J. D. Kluge, Solano Irrigation District
Manager Mike Hardesty, Reclamation District 2068
Manager Don Holdener, Maine Prairie Water District

CALL TO ORDER

The meeting was called to order at 6:30 P.M. by Vice-Chair Hannigan.

APPROVAL OF AGENDA

On a motion by Mayor Price and a second by Mayor Sanchez the Board unanimously approved the agenda.

CLOSED SESSION

The Board moved into closed session at 6:31 PM to discuss Public Employee Appointment: General Manager in accordance with Section 54957(b). The closed session ended at 6:50 PM with no reportable actions.

PUBLIC COMMENT

There were no public comments.

CONSENT ITEMS

On a motion by Mayor Price and a second by Mayor Sanchez the Board unanimously approved the following Consent Items:

- (A) Minutes
- (B) Expenditure Approvals
- (C) Authorize Contract with Summers Engineering, Inc. for the PSC Headworks Improvement Project
- (D) LPCCC: Putah Creek Floodplain Restoration Project

BOARD MEMBER REPORTS

Supervisor Seifert gave a summary of the May 11 Water Policy Committee meeting. Presentations on the Solano Habitat Conservation Plan by Chris Lee and the Yolo Habitat Conservation Plan/Natural Community Conservation Plan by Petrea Marchand were given. The modified BDCP approach was discussed. The revised approach will include a

water conveyance program, California WaterFix, and a habitat restoration program, EcoRestore. The Committee will continue to follow these efforts as they develop. Drought management and the differences between water conservation in the various Cities was also discussed.

GENERAL MANAGER’S REPORT

The Board requested additional information on the Water Agency’s Turf Rebate Program. Interim General Manager Pate confirmed that a policy to allow homeowners with already dead lawns to participate in the program has been implemented. Additionally, the program is currently ramping up staffing with summer interns as they become available with an increased staff level compared to last year.

The first meeting for the Strategic Planning Stakeholder Group was convened last Monday. Responses from a Request For Qualifications for consulting services to assist with development of the plan were reviewed. There were 10 responses total, 6 were deemed as good qualified responses. All 6 were invited to send in detailed proposals; the two rated highest by staff will be interviewed by the Group. A recommendation for these services will be brought to the Board for consideration in August.

GENERAL MANAGER APPOINTMENT

On a motion by Supervisor Sprong and a second by Supervisor Vasquez the Board approved an employment agreement with Roland Sanford as the new General Manager of the Water Agency, unanimously with abstention by Manager Hardesty.

FISCAL YEAR 2014-2015 BUDGET PROJECTIONS

Interim General Manager Pate summarized the updated 2014-2015 Budget Projections. The overall \$5 million dollar deficit projected at the beginning of the fiscal year is now approximately a \$3 million dollar surplus. Tax revenues were higher than anticipated; some large projects capital projects were delayed to the next fiscal year; and drought conditions reduced the level of necessary routine maintenance activities. On a motion by Mayor Batchelor and a second by Manager Holdener the report was approved unanimously.

DELTA ISSUES

No Report.

TIME AND PLACE OF NEXT MEETING

The next regularly scheduled meeting will be Thursday, June 11, 2015 at 6:30 p.m. in the Berryessa Room located at the Solano County Water Agency offices.

ADJOURNMENT

This meeting of the Solano County Water Agency Board of Directors was adjourned at 7:00 p.m.

Thomas L. Pate
Interim General Manager & Secretary to the
Solano County Water Agency

ACTION OF
SOLANO COUNTY WATER AGENCY

DATE: June 11, 2015
SUBJECT: Expenditures Approval

RECOMMENDATION:

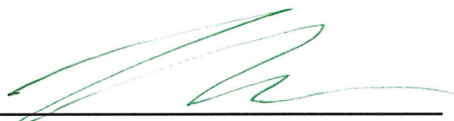
Approve expenditures from the Water Agency checking accounts for the month of May, 2015.

FINANCIAL IMPACT:

All expenditures are within previously approved budget amounts.

BACKGROUND:

The Water Agency auditor has recommended that the Board of Directors approve all expenditures (in arrears). Attached is a summary of expenditures from the Water Agency’s checking accounts for the month of May, 2015. Additional backup information is available upon request.

Recommended: 
Thomas L. Pate, Interim General Manager

<input type="checkbox"/> Approved as recommended	<input type="checkbox"/> Other (see below)
--	--

Modification to Recommendation and/or other actions:

I, Thomas L. Pate, Interim General Manager and Secretary to the Solano County Water Agency, do hereby certify that the foregoing action was regularly introduced, passed, and adopted by said Board of Directors at a regular meeting thereof held on June 11, 2015 by the following vote.

Ayes:

Noes:

Abstain:

Absent:

Thomas L. Pate
Interim General Manager & Secretary to the
Solano County Water Agency

SOLANO COUNTY WATER AGENCY

Cash Disbursements Journal

For the Period From May 1, 2015 to May 31, 2015

Filter Criteria includes: Report order is by Date. Report is printed in Detail Format.

Date	Check #	Name	Account	Line Description	Debit Amount	Credit Amount
5/1/15	100177	PATE, THOMAS	2023AC	FSA REMIBURSEMENT MAY 2015	245.00	
			1020SC	PATE, THOMAS		245.00
5/1/15	26038	RECLAMATION DISTRI	2020SC	Invoice: SC0515	2,000.00	
			1020SC	RECLAMATION DISTRICT 2060		2,000.00
5/1/15	EFT	PAYCHEX, INC.	2020SC	Invoice: 2015042901	187.78	
			1020SC	PAYCHEX, INC.		187.78
5/7/15	EFT	CALPERS	2020SC	Invoice: SIP 4.25.15	8,115.83	
			1020SC	CALPERS		8,115.83
5/7/15	EFT	CALPERS	2020SC	Invoice: PEPRA PPE 4.25.15	336.65	
			1020SC	CALPERS		336.65
5/7/15	EFT	CALPERS	2020SC	Invoice: PPE 4.25.15	10,200.08	
			1020SC	CALPERS		10,200.08
5/8/15	25999	CLEAN TECH ADVOCA	2020SC	Invoice: APRIL 2015	5,400.00	
			1020SC	CLEAN TECH ADVOCATES		5,400.00
5/8/15	26000	TERRENCE CONNOLL	2020SC	Invoice: FCAC APR 15 PER DIEM	42.25	
			1020SC	TERRENCE CONNOLLY		42.25
5/8/15	26001	CPS HR CONSULTING	2020SC	Invoice: INV348682	922.19	
			1020SC	CPS HR CONSULTING		922.19
5/8/15	26002	EXPRESS EMPLOYEME	2020SC	Invoice: 15664277-9	385.28	
			1020SC	EXPRESS EMPLOYEMENT PROFESSIONALS		385.28
5/8/15	26003	FEDEX EXPRESS	2020SC	Invoice: 5-004-41762	487.19	
			1020SC	FEDEX EXPRESS		487.19
5/8/15	26004	DENNIS GRUNSTAD	2020SC	Invoice: 4-(15)	965.00	
			1020SC	DENNIS GRUNSTAD		965.00
5/8/15	26005	INTERSTATE OIL COM	2020SC	Invoice: CL84635	554.28	
			1020SC	INTERSTATE OIL COMPANY		554.28
5/8/15	26006	JM TECHNOLOGIES	2020SC	Invoice: 1440	4,187.03	
			1020SC	JM TECHNOLOGIES		4,187.03
5/8/15	26007	CHARLES KARNOPP	2020SC	Invoice: FCAC APR 15 PER DIEM	35.93	
			1020SC	CHARLES KARNOPP		35.93
5/8/15	26008	RONALD KOEHNE	2020SC	Invoice: FCAC APR 15 PER DIEM	25.00	
			1020SC	RONALD KOEHNE		25.00
5/8/15	26009	SANDRA MCLEAN	2020SC	Invoice: JAN - APR 2015	71.22	
			1020SC	SANDRA MCLEAN		71.22
5/8/15	26010	MECOM EQUIPMENT,	2020SC	Invoice: C521369	369.70	
			1020SC	MECOM EQUIPMENT, LLC		369.70
5/8/15	26011	RUDOLF OHLEMUTZ	2020SC	Invoice: FCAC APR 15 PER DIEM	59.50	
			1020SC	RUDOLF OHLEMUTZ		59.50
5/8/15	26012	PACIFIC GAS & ELECT	2020SC	Invoice: 0007436119-7	11,915.00	
			1020SC	PACIFIC GAS & ELECTRIC CO,		11,915.00
5/8/15	26013	PRETTY POTTIES	2020SC	Invoice: 62	107.88	
			1020SC	PRETTY POTTIES		107.88
5/8/15	26014	DAVID HICKMAN	2020SC	Invoice: APIRL 2015 REIMB	85.05	
			1020SC	DAVID HICKMAN		85.05
5/8/15	26015	TERRY RIDDLE	2020SC	Invoice: FCAC APR 15 PER DIEM	40.76	
			1020SC	TERRY RIDDLE		40.76
5/8/15	26016	SOLANO COUNTY FLE	2020SC	Invoice: APRIL 2015	189.93	

SOLANO COUNTY WATER AGENCY

Cash Disbursements Journal

For the Period From May 1, 2015 to May 31, 2015

Filter Criteria includes: Report order is by Date. Report is printed in Detail Format.

Date	Check #	Name	Account	Line Description	Debit Amount	Credit Amount
			1020SC	SOLANO COUNTY FLEET MANAGEMENT		189.93
5/8/15	26017	STAPLES	2020SC	Invoice: 1288551101	39.65	
			2020SC	Invoice: 1288495471	87.78	
			2020SC	Invoice: 1300186371	20.16	
			2020SC	Invoice: 1292751641	151.42	
			2020SC	Invoice: 1300794611	73.97	
			1020SC	STAPLES		372.98
5/8/15	26018	SWRCB	2020SC	Invoice: WPCNP 3 STORMWATER	885.00	
			1020SC	SWRCB		885.00
5/8/15	26019	TRAFFIC MANAGEME	2020SC	Invoice: 233539	2,874.00	
			1020SC	TRAFFIC MANAGEMENT, INC		2,874.00
5/8/15	26020	WILDLIFE SURVEY	2020SC	Invoice: LPCCC-FY2014-15_8	1,531.25	
			2020SC	Invoice: SCWA-FY2014-15-8	5,904.90	
			2020SC	Invoice: SCWA-FY2014-15_9	3,475.05	
			2020SC	Invoice: LPCCC-FY2014-15_9	2,008.93	
			1020SC	WILDLIFE SURVEY		12,920.13
5/8/15	26021	WINTERS TOW SERVIC	2020SC	Invoice: 235	190.00	
			1020SC	WINTERS TOW SERVICE		190.00
5/8/15	26022	YOLO-SOLANO AQMD	2020SC	Invoice: NOV #T15-137	250.00	
			1020SC	YOLO-SOLANO AQMD		250.00
5/8/15	26023	TURF REBATE	2020SC	Invoice: TURF REBATE - JOWENS	1,000.00	
			1020SC	TURF REBATE		1,000.00
5/8/15	26024	TURF REBATE	2020SC	Invoice: TURF REBATE - BOGARD	1,000.00	
			1020SC	TURF REBATE		1,000.00
5/8/15	26025	TURF REBATE	2020SC	Invoice: TURF REBATE - ROBBIN	5,000.00	
			1020SC	TURF REBATE		5,000.00
5/8/15	EFT	PACIFIC GAS & ELECT	2020SC	Invoice: 3/13/15-4/12/15	683.09	
			1020SC	PACIFIC GAS & ELECTRIC CO,		683.09
5/8/15	EFT	CALPERS	2020SC	Invoice: MAY HEALTH 2015	14,474.87	
			1020SC	CALPERS		14,474.87
5/9/15	EFT	PAYROLL TAXES	2024AC	EMPLOYEE LIABILITIES - 5.9.15	9,718.46	
			6012AC	EMPLOYER LIABILITIES - 5.9.15	2,581.66	
			1020SC	PAYROLL TAXES		12,300.12
5/13/15	26026	ARAMARK REFRESHM	2020SC	Invoice: 9494344	236.74	
			1020SC	ARAMARK REFRESHMENT SERVICES		236.74
5/13/15	26027	CALIFORNIA SURVEYI	2020SC	Invoice: 32680 /1	1,196.00	
			1020SC	CALIFORNIA SURVEYING & DRAFTIN		1,196.00
5/13/15	26028	CONSERVATION GENE	2020SC	Invoice: 00054	5,500.00	
			1020SC	CONSERVATION GENERATION		5,500.00
5/13/15	26029	DAILY REPUBLIC, INC.	2020SC	Invoice: 24568031-001	24.04	
			1020SC	DAILY REPUBLIC, INC.		24.04
5/13/15	26030	DEPARTMENT OF WAT	2020SC	Invoice: 15-024-O MAY 2015	3,115.00	
			2020SC	Invoice: 15-232-V MAR 2015		54,803.00
			2020SC	Invoice: 15-026-T MAY 2015	407,504.00	
			1020SC	DEPARTMENT OF WATER RESOURCES		355,816.00
5/13/15	26031	EXPRESS EMPLOYEME	2020SC	Invoice: 15718817-8	385.28	
			2020SC	Invoice: 15691939-1	385.28	
			1020SC	EXPRESS EMPLOYEMENT PROFESSIONALS		770.56

SOLANO COUNTY WATER AGENCY

Cash Disbursements Journal

For the Period From May 1, 2015 to May 31, 2015

Filter Criteria includes: Report order is by Date. Report is printed in Detail Format.

Date	Check #	Name	Account	Line Description	Debit Amount	Credit Amount
5/13/15	26032	FORD LINCOLN FAIRFI	2020SC 1020SC	Invoice: 66767 FORD LINCOLN FAIRFIELD	51.06	51.06
5/13/15	26033	FRONTIER AG CO., INC	2020SC 2020SC 1020SC	Invoice: 63505 Invoice: 63504 FRONTIER AG CO., INC.	115.20 288.40	403.60
5/13/15	26034	GATES CONSULTING S	2020SC 1020SC	Invoice: 168 GATES CONSULTING SERVICES	320.00	320.00
5/13/15	26035	OKITA, DAVID B.	2020SC 1020SC	Invoice: MAR 2014 - APR 2015 OKITA, DAVID B.	46.25	46.25
5/13/15	26036	PACIFIC ACE HARDW	2020SC 2020SC 2020SC 2020SC 2020SC 1020SC	Invoice: 856784 Invoice: 181407 Invoice: 182398 Invoice: 860255 Invoice: 860252 PACIFIC ACE HARDWARE	48.43 7.39 46.16 73.82 191.77	367.57
5/13/15	26037	PROVISUAL DESIGN	2020SC 1020SC	Invoice: 221249 PROVISUAL DESIGN	125.00	125.00
5/13/15	26039	RON DUPRATT FORD	2020SC 1020SC	Invoice: 251859 RON DUPRATT FORD	57.42	57.42
5/13/15	26040	SBS LEASING A PROGR	2020SC 2020SC 1020SC	Invoice: 45448669 Invoice: 45450353 SBS LEASING A PROGRAM DE LAGE	980.93 77.67	1,058.60
5/13/15	26041	SHARP ELECTRONICS	2020SC 1020SC	Invoice: C861845-541 SHARP ELECTRONICS CORPRATION	1,446.43	1,446.43
5/13/15	26042	STANDARD INSURAN	2020SC 1020SC	Invoice: 006492990046MAY2015 STANDARD INSURANCE COMPANY	1,044.81	1,044.81
5/13/15	26043	UNAVCO, INC.	2020SC 1020SC	Invoice: 001344 UNAVCO, INC.	332.31	332.31
5/13/15	26044	GHD, INC.	2020SC 2020SC 1020SC	Invoice: 81414 Invoice: 91413 GHD, INC.	1,564.00 10,843.00	12,407.00
5/13/15	26045	YOLO COUNTY RCD	2020SC 1020SC	Invoice: 6: 1.1.15 - 4.4.15 YOLO COUNTY RCD	7,485.36	7,485.36
5/13/15	26046	TURF REBATE	2020SC 1020SC	Invoice: TURF REBATE - BOTTI TURF REBATE	1,800.00	1,800.00
5/13/15	26047	TURF REBATE	2020SC 1020SC	Invoice: TURF REBATE - JSANDE TURF REBATE	606.00	606.00
5/13/15	26048	TURF REBATE	2020SC 1020SC	Invoice: TURF REBATE - ORHUN TURF REBATE	985.00	985.00
5/13/15	26049	TURF REBATE	2020SC 1020SC	Invoice: TURF REBATE - JWILLI TURF REBATE	1,524.00	1,524.00
5/13/15	26050	TURF REBATE	2020SC 1020SC	Invoice: TURF REBATE - DEMORY TURF REBATE	1,000.00	1,000.00
5/13/15	26051	TURF REBATE	2020SC 1020SC	Invoice: TURF REBATE - SOUSA TURF REBATE	1,000.00	1,000.00
5/13/15	26052	TURF REBATE	2020SC 1020SC	Invoice: TURF REBATE - RIDER TURF REBATE	1,198.00	1,198.00
5/13/15	26053	TURF REBATE	2020SC 1020SC	Invoice: TURF REBATE - GARDEN TURF REBATE	1,224.00	1,224.00

SOLANO COUNTY WATER AGENCY

Cash Disbursements Journal

For the Period From May 1, 2015 to May 31, 2015

Filter Criteria includes: Report order is by Date. Report is printed in Detail Format.

Date	Check #	Name	Account	Line Description	Debit Amount	Credit Amount
5/13/15	26054	TURF REBATE	2020SC 1020SC	Invoice: TURF REBATE - TREMAI TURF REBATE	2,000.00	2,000.00
5/13/15	26054V	TURF REBATE	2020SC 1020SC	Invoice: TURF REBATE - TREMAI TURF REBATE	2,000.00	2,000.00
5/13/15	26055	TURF REBATE	2020SC 1020SC	Invoice: TURF REBATE - TREMAI TURF REBATE	2,000.00	2,000.00
5/13/15	26056	TURF REBATE	2020SC 1020SC	Invoice: TURF REBATE - SWEENE TURF REBATE	1,074.00	1,074.00
5/13/15	26057	TURF REBATE	2020SC 1020SC	Invoice: TURF REBATE - FARNER TURF REBATE	959.00	959.00
5/13/15	26058	TURF REBATE	2020SC 1020SC	Invoice: TURF REBATE - LEW TURF REBATE	2,000.00	2,000.00
5/13/15	26059	TURF REBATE	2020SC 1020SC	Invoice: TURF REBATE - EVERS TURF REBATE	800.00	800.00
5/13/15	26060	TURF REBATE	2020SC 1020SC	Invoice: TURF REBATE - JCAMPB TURF REBATE	860.00	860.00
5/13/15	26061	TURF REBATE	2020SC 1020SC	Invoice: TURF REBATE - PRICED TURF REBATE	756.00	756.00
5/14/15	EFT	CALPERS	2020SC 1020SC	Invoice: SIP 5.9.15 CALPERS	2,665.83	2,665.83
5/14/15	EFT	CALPERS	2020SC 1020SC	Invoice: PPE 5.9.15 CALPERS	8,680.69	8,680.69
5/14/15	EFT	CALPERS	2020SC 1020SC	Invoice: PEPRA PPE 5.9.15 CALPERS	336.65	336.65
5/15/15	EFT	PAYCHEX, INC.	2020SC 1020SC	Invoice: 2015051301 PAYCHEX, INC.	190.60	190.60
5/15/15	EFT	VERIZON WIRELESS	2020SC 1020SC	Invoice: 9744704430 VERIZON WIRELESS	2,018.02	2,018.02
5/15/15	EFT	CHEVRON AND TEXA	2020SC 1020SC	Invoice: 44283175 CHEVRON AND TEXACO	182.49	182.49
5/18/15	EFT	PAYCHEX, INC.	6111AC 1020SC	FSA ADMIN FEES - MAY 2015 PAYCHEX, INC.	106.75	106.75
5/19/15	26062	CB&T/ACWA-JPIA	2020SC 1020SC	Invoice: 0350180 CB&T/ACWA-JPIA	1,461.11	1,461.11
5/19/15	26063	AMERICAN TOWER CO	2020SC 1020SC	Invoice: 1930313 AMERICAN TOWER CORPORATION	514.07	514.07
5/19/15	26064	AYRES ASSOCIATES	2020SC 1020SC	Invoice: 158243 AYRES ASSOCIATES	853.22	853.22
5/19/15	26065	CDW GOVERNMENT, I	2020SC 1020SC	Invoice: VF81688 CDW GOVERNMENT, INC.	847.47	847.47
5/19/15	26066	AT&T MOBILITY	2020SC 1020SC	Invoice: 4/23/15 - 5/22/15 AT&T MOBILITY	140.99	140.99
5/19/15	26067	CINTAS CORPORATIO	2020SC 1020SC	Invoice: 5003003050 CINTAS CORPORATION	62.16	62.16
5/19/15	26068	DEPARTMENT OF GEN	2020SC 1020SC	Invoice: 2827705 DEPARTMENT OF GENERAL SERVICES	45.00	45.00
5/19/15	26069	DEPT OF FORESTRY &	2020SC	Invoice: 15-05-38S	46.68	

SOLANO COUNTY WATER AGENCY

Cash Disbursements Journal

For the Period From May 1, 2015 to May 31, 2015

Filter Criteria includes: Report order is by Date. Report is printed in Detail Format.

Date	Check #	Name	Account	Line Description	Debit Amount	Credit Amount
			1020SC	DEPT OF FORESTRY & FIRE PROTECTION		46.68
5/19/15	26070	EXPRESS EMPLOYEME	2020SC 1020SC	Invoice: 15726348-4 EXPRESS EMPLOYEMENT PROFESSIONALS	192.64	192.64
5/19/15	26071	EYASCO, INC.	2020SC 1020SC	Invoice: 3754 EYASCO, INC.	23,688.06	23,688.06
5/19/15	26072	GRAINGER	2020SC 1020SC	Invoice: 9726229751 GRAINGER	924.40	924.40
5/19/15	26073	HERUM \ CRABTREE \	2020SC 2020SC 2020SC 2020SC 1020SC	Invoice: 7551 Invoice: 77550 Invoice: 77549 Invoice: 77552 HERUM \ CRABTREE \ SUNTAG	64.26 96.39 3,284.91 631.89	4,077.45
5/19/15	26074	IAN BAKER	2020SC 1020SC	Invoice: APRIL 2015 IAN BAKER	236.57	236.57
5/19/15	26075	INTERSTATE OIL COM	2020SC 1020SC	Invoice: CL86014 INTERSTATE OIL COMPANY	1,151.57	1,151.57
5/19/15	26076	VOID	1020SC	VOID		
5/19/15	26077	INTEGRATED ENVIRO	2020SC 2020SC 2020SC 1020SC	Invoice: 72635 Invoice: 72636 Invoice: 72634 INTEGRATED ENVIRONMENTAL RESTORATION	862.50 5,356.02 4,625.00	10,843.52
5/19/15	26078	J. RICHARD EICHMAN,	2020SC 1020SC	Invoice: APRIL 2015 J. RICHARD EICHMAN, CPA	239.65	239.65
5/19/15	26079	LEE, CHRISTOPHER R.	2020SC 1020SC	Invoice: MAY 2015 LEE, CHRISTOPHER R.	231.28	231.28
5/19/15	26080	LSA ASSOCIATES, INC.	2020SC 1020SC	Invoice: 136550 LSA ASSOCIATES, INC.	51,481.31	51,481.31
5/19/15	26081	LUHDORFF & SCALMA	2020SC 1020SC	Invoice: 30674 LUHDORFF & SCALMANINI	596.25	596.25
5/19/15	26082	M&M SANITARY LLC	2020SC 1020SC	Invoice: 471157 M&M SANITARY LLC	128.00	128.00
5/19/15	26083	MISSION LINEN SUPPL	2020SC 2020SC 2020SC 2020SC 1020SC	Invoice: 480346898 Invoice: 480345997 Invoice: 500035527 Invoice: 480347813 MISSION LINEN SUPPLY	112.85 120.85 84.87 108.86	427.43
5/19/15	26084	NORMANDEAU ASSOC	2020SC 1020SC	Invoice: 59330 NORMANDEAU ASSOCIATES, INC.	3,432.00	3,432.00
5/19/15	26085	PISANIS AUTO PARTS	2020SC 2020SC 2020SC 2020SC 2020SC 1020SC	Invoice: 669037 Invoice: 669656 Invoice: 669657 Invoice: 669590 Invoice: 670502 PISANIS AUTO PARTS	45.05 7.07 4.07 4.29 93.31	153.79
5/19/15	26086	THE REPORTER	2020SC 1020SC	Invoice: 0005468388 THE REPORTER	982.26	982.26
5/19/15	26087	SAM'S CLUB	2020SC 2020SC 1020SC	Invoice: 008275 Invoice: 005698 SAM'S CLUB	130.13 76.20	206.33
5/19/15	26088	SHANDAM CONSULTI	2020SC	Invoice: 0430150228	2,310.00	

SOLANO COUNTY WATER AGENCY

Cash Disbursements Journal

For the Period From May 1, 2015 to May 31, 2015

Filter Criteria includes: Report order is by Date. Report is printed in Detail Format.

Date	Check #	Name	Account	Line Description	Debit Amount	Credit Amount
			1020SC	SHANDAM CONSULTING		2,310.00
5/19/15	26089	SHELDON	2020N 1020SC	Invoice: 01228 SHELDON	99.00	99.00
5/19/15	26090	SOLANO IRRIGATION	2020SC 1020SC	Invoice: 0003336 SOLANO IRRIGATION DISTRICT	183,080.28	183,080.28
5/19/15	26091	SOLANO RESOURCE C	2020SC 1020SC	Invoice: 836 SOLANO RESOURCE CONSERVATION DISTRICT	4,110.05	4,110.05
5/19/15	26092	SOMACH, SIMMONS &	2020SC 1020SC	Invoice: 2016194 SOMACH, SIMMONS & DUNN	3,382.50	3,382.50
5/19/15	26093	STATE WATER CONTR	2020SC 1020SC	Invoice: FY 2015-2016 STATE WATER CONTRACTORS	93,904.00	93,904.00
5/19/15	26094	STERLING MAY CO.	2020SC 2020SC 1020SC	Invoice: 30469 Invoice: 31035 STERLING MAY CO.	2,719.19 172.24	2,891.43
5/19/15	26095	SUISUN VALLEY FRUI	2020SC 2020SC 2020SC 2020SC 2020SC 2020SC 2020SC 2020SC 1020SC	Invoice: 39154 Invoice: 39171 Invoice: 39287 Invoice: 39247 Invoice: 39162 Invoice: 39264 Invoice: 39580 Invoice: 39365 SUISUN VALLEY FRUIT GROWERS AS	266.01 56.88 9.89 484.56 43.34 205.52 90.60 63.21	1,220.01
5/19/15	26096	GUCKENHEIMER SERV	2020SC 1020SC	Invoice: 4228001787 GUCKENHEIMER SERVICES, LLC	601.89	601.89
5/19/15	26097	THE TREMONT GROUP	2020SC 2020SC 1020SC	Invoice: 1256256 Invoice: 1256260 THE TREMONT GROUP, INC.	313.30 113.53	426.83
5/19/15	26098	TRK ATTACHMENTS I	2020SC 1020SC	Invoice: 050815-255 TRK ATTACHMENTS INC.	1,306.25	1,306.25
5/19/15	26099	VACAVILLE TRAILER	2020SC 2020SC 2020SC 2020SC 1020SC	Invoice: 10205 Invoice: 10204 Invoice: 10283 Invoice: 10229 VACAVILLE TRAILER SALES	347.30 358.03 22.23 15.78	743.34
5/19/15	26100	VISION TECHNOLOGY	2020SC 1020SC	Invoice: 30234 VISION TECHNOLOGY SOLUTIONS, LLC DBC	200.00	200.00
5/19/15	26101	WINTERS EXPRESS, LL	2020SC 1020SC	Invoice: 756 WINTERS EXPRESS, LLC	150.00	150.00
5/19/15	26102	JACK BATCHELOR	2020SC 2020SC 2020SC 1020SC	Invoice: WATER POLI MAY 2015 Invoice: EXEC MEET MAY 2015 Invoice: MAY 2015 PER DIEM JACK BATCHELOR	127.60 100.00 13.80	241.40
5/19/15	26103	OSBY DAVIS	2020SC 1020SC	Invoice: MAY 2015 PER DIEM OSBY DAVIS	100.00	100.00
5/19/15	26104	MIKE HARDESTY	2020SC 1020SC	Invoice: MAY 2015 PER DIEM MIKE HARDESTY	100.00	100.00
5/19/15	26105	DON HOLDENER	2020SC 1020SC	Invoice: MAY 2015 PER DIEM DON HOLDENER	108.05	108.05
5/19/15	26106	HOME DEPOT CREDIT	2020SC 2020SC	Invoice: 5010105 Invoice: 5010101	436.60 111.66	

SOLANO COUNTY WATER AGENCY

Cash Disbursements Journal

For the Period From May 1, 2015 to May 31, 2015

Filter Criteria includes: Report order is by Date. Report is printed in Detail Format.

Date	Check #	Name	Account	Line Description	Debit Amount	Credit Amount
			2020SC	Invoice: 7020951	48.48	
			2020SC	Invoice: FCH-005581064	20.00	
			1020SC	HOME DEPOT CREDIT SERVICE		616.74
5/19/15	26107	JOHN D. KLUGE	2020SC	Invoice: MAY 2015 PER DIEM	100.00	
			1020SC	JOHN D. KLUGE		100.00
5/19/15	26108	ELIZABETH PATTERSON	2020SC	Invoice: WATER POLI MAY 2015	117.25	
			2020SC	Invoice: MAY 2015 PER DIEM	100.00	
			1020SC	ELIZABETH PATTERSON		217.25
5/19/15	26109	LINDA SEIFERT	2020SC	Invoice: WATER POLI MAY 2015	100.00	
			2020SC	Invoice: MAY 2015 PER DIEM	100.00	
			1020SC	LINDA SEIFERT		200.00
5/19/15	26110	JAMES SPERING	2020SC	Invoice: EXEC MEET MAY 2015	100.00	
			2020SC	Invoice: MAY 2015 PER DIEM	100.00	
			1020SC	JAMES SPERING		200.00
5/19/15	26111	JOHN VASQUEZ	2020SC	Invoice: MAY 2015 PER DIEM	100.00	
			1020SC	JOHN VASQUEZ		100.00
5/19/15	26112	TURF REBATE	2020SC	Invoice: TURF REBATE - PRICEJ	5,000.00	
			1020SC	TURF REBATE		5,000.00
5/19/15	26113	TURF REBATE	2020SC	Invoice: TURF REBATE - KILLPA	1,000.00	
			1020SC	TURF REBATE		1,000.00
5/19/15	26114	TURF REBATE	2020SC	Invoice: TURF REBATE - MILLED	1,000.00	
			1020SC	TURF REBATE		1,000.00
5/19/15	26115	TURF REBATE	2020SC	Invoice: TURF REBATE - BOYD	951.00	
			1020SC	TURF REBATE		951.00
5/19/15	26116	ARMONI CARTER	2020SC	Invoice: HS VIDEO 2015 - JM	250.00	
			1020SC	ARMONI CARTER		250.00
5/19/15	26117	ARMONI CARTER	2020SC	Invoice: HS VIDEO 2015 - CC	250.00	
			1020SC	ARMONI CARTER		250.00
5/19/15	26118	ARMONI CARTER	2020SC	Invoice: HS VIDEO 2016 - PB	500.00	
			1020SC	ARMONI CARTER		500.00
5/19/15	26119	ARMONI CARTER	2020SC	Invoice: HS VIDEO 2015 - ML	500.00	
			1020SC	ARMONI CARTER		500.00
5/19/15	26120	ARMONI CARTER	2020SC	Invoice: HS VIDEO 2015 - KG	500.00	
			1020SC	ARMONI CARTER		500.00
5/19/15	26121	ARMONI CARTER	2020SC	Invoice: HS VIDEO 2015 - OC	500.00	
			1020SC	ARMONI CARTER		500.00
5/19/15	26122	ARMONI CARTER	2020SC	Invoice: HS VIDEO 2015 - JR	750.00	
			1020SC	ARMONI CARTER		750.00
5/19/15	26123	ARMONI CARTER	2020SC	Invoice: HS VIDEO 2015 - AC	750.00	
			1020SC	ARMONI CARTER		750.00
5/25/15	CUETA	BANK OF THE WEST	6144SC	CHEYENNE RIVERVIEW - LIFE	440.00	
				RING CABINET		
			6300AC	SAMS CLUB - SUPPLIES	9.69	
			6300AC	CHEVRON - WINDSHIELD WIPER	4.30	
				FLUID		
			6310AC	CHEVRON - FUEL	37.53	
			1020SC	BANK OF THE WEST		491.52
5/25/15	SNYDE	BANK OF THE WEST	6310AC	CHEVRON - FUEL	87.96	
			6166SC	WALMART - SUPPLIES	75.65	
			6230SC	PACIFIC COAST HARDWARE -	26.31	
				SUPPLIES		
			6300AC	AGILIS LIXUP MOTOSFTY -	91.96	
				VEHICLE TRACKING		

For the Period From May 1, 2015 to May 31, 2015

Date	Check #	Name	Account	Line Description	Debit Amount	Credit Amount
			6300AC	AMERICAN TIRE CO - 4 TIRES	448.57	
			6090AC	PAYPAL IECA ONLINE - CISEC	300.00	
				COURSE		
			6360AC	PAYPAL IECA ONLINE - GROUND	30.00	
				CONTROL SUPPLIES		
			6310AC	LEISURE TOWN 76 - FUEL	24.69	
			1020SC	BANK OF THE WEST		1,085.14
	Total				991,237.39	991,237.39

ACTION OF
SOLANO COUNTY WATER AGENCY

DATE: June 11, 2015
SUBJECT: PRE-APPROVAL OF FISCAL YEAR 2015-2016 PAYMENTS

RECOMMENDATIONS:

Authorize payments of the following bills for Fiscal Year 2015-2016 within budget amounts:

- 1. Payroll.
- 2. Water payments to the State of California for the State Water Project.
- 3. Payments to Napa County pursuant to the Napa Make Whole Agreement.
- 4. Payments to the Solano Irrigation District for operations and maintenance of the Solano Project.
- 5. Payments to the Solano County Resource Management Department for labor and equipment charges of Ulati and Green Valley Flood Control projects.
- 6. Payments to consultants and contractors with Board approved contracts.
- 7. Payments to legal counsel.
- 8. Payments to CalPERS for Health Plan payments.


FINANCIAL IMPACT:

☒ Continued on next page

None.

BACKGROUND:

Each year we request the Board to authorize payments for items that are based on regular payments schedules and contractual obligations. Payment of these items will not require additional approval by the Board or purchase orders prior to payment. Payments made under this category will be reported to the Board of Directors in arrears.

Recommended: 
Thomas L. Pate, Interim General Manager

☐ Approved as Recommended ☐ Other (see below)

Modification to Recommendation and/or other actions:

I, Thomas L. Pate, Interim General Manager and Secretary to the Solano County Water Agency, do hereby certify that the foregoing action was regularly introduced, passed, and adopted by said Board of Directors at a regular meeting thereof held on June 11, 2015 by the following vote:

Ayes:
Noes:
Abstain:
Absent:

Thomas L. Pate
Interim General Manager & Secretary to the
Solano County Water Agency

9. Payments to Solano County Fleet Operations for repair and maintenance of Agency vehicles and equipment.
10. Ulati & Green Valley Flood Control Projects costs for purchase, hauling & placement of rock rip rap.
11. Ulati, Green Valley, and Solano Project culvert and pipe purchases.
12. Payments to ACWA-Joint Powers Insurance Authority for workers compensation, liability and property insurance.
13. Lower Putah Creek Coordinating Committee Pre-Approved Expenditures.
14. Agency credit card (currently through Bank of the West) payment when individual charges are all \$500 or under (or pre-approved).
15. Payments for expenses associated with Board approved Grants.
16. Payments to ACWA Services Corp (ASC) for dental premiums.
17. Payments to CalPERS Long Term Care for long term care insurance premiums.
18. Payments for regulatory permits and permit fees for SCWA Projects.
19. Payments for the Turf Replacement Rebate Program.
20. Payments for vehicle repair expenses.
21. Payments to CalPERS for 457 Deferred Compensation Program.
22. Payments to Verizon Wireless for cellular phone service.
23. Payments to A T & T for office telephone and data services
24. Herbicide and Pesticide purchases for Flood Control projects.
25. Payments to laboratories for water quality analysis.
26. Payments to Solano Irrigation District for AG Water Conservation Expenses.
27. Payments to Standard Insurance Company and Metlife for Short/Long Term Disability.
28. Payments to Staples, Inc. credit card for office supplies when individual charges are \$500 or under (or pre-approved).
29. Payments to Interstate Oil, Chevron, and Shell credit cards for fuel when individual charges are \$500 or under (or pre-approved).
30. Payments to vendor supply credit accounts for supplies when individual charges are \$500 or under (or pre-approved).
31. Payments to FedEx for shipping when individual charges are \$500 or under (or pre-approved).
32. Payments to Pitney Bowes for postage.
33. Association dues to organizations identified in budget documents.
34. Payments to Vision Internet for website hosting.
35. Payments for software purchases.

ACTION OF
SOLANO COUNTY WATER AGENCY

DATE: June 11, 2015

SUBJECT: SCWA STATEMENT OF INVESTMENT POLICY FOR FISCAL YEAR 2015-2016

RECOMMENDATION:

Approve the following Statement of Investment Policy:

"Funds of the Solano County Water Agency shall only be invested in the State of California's Local Agency Investment Fund (LAIF), the Solano County Investment Pool, California Asset Management Program (CAMP) or Federal Deposit Insurance Corporation (FDIC) insured accounts in a bank or savings and loan association."

FINANCIAL IMPACT:

None

BACKGROUND:

State Law effective January 1, 1996 requires public agencies to annually approve a Statement of Investment Policy at a public meeting. Any changes to the policy must also be considered at a public meeting.

The recommended investment policy simply reflects the current investment policy of the Water Agency whereby all Water Agency funds are invested in the Local Agency Investment Fund (LAIF) and the California Asset Management Program (CAMP). Operating funds are held in Federal Deposit Insurance Corporation insured accounts with Bank of the West. Property tax revenue is wire transferred directly from the County Treasury into the CAMP accounts. Funds are then transferred from the LAIF or CAMP to the Bank of the West bank accounts as needed to fund operating expenses.

Recommended: 
Thomas L. Pate, Interim General Manager

☐ Approved as recommended ☐ Other (see below)

Modification to Recommendation and/or other actions:

I, Thomas L. Pate, Interim General Manager and Secretary to the Solano County Water Agency, do hereby certify that the foregoing action was regularly introduced, passed, and adopted by said Board of Directors at a regular meeting thereof held on June 11, 2015 by the following vote.

Ayes:

Noes:

Abstain:

Absent:

Thomas L. Pate
Interim General Manager & Secretary to the
Solano County Water Agency

RESOLUTION NUMBER 2015-04

**RESOLUTION OF THE SOLANO COUNTY WATER AGENCY
ESTABLISHING FISCAL YEAR 2015-2016 APPROPRIATION LIMIT**

Article XIII-B of the California Constitution requires that each year the governing body of each local jurisdiction shall, by resolution, establish its appropriations limit for the following fiscal year at a regularly scheduled or noticed special meeting; and

The appropriations limit for the Solano County Water Agency for fiscal year 2015-2016 of \$13,874,314 has been calculated based on adjustment factors using rates of change in California Per Capita Income and Solano County Population Growth.

THEREFORE, BE IT RESOLVED that the Board of Directors of the Solano County Water Agency establishes an appropriations limit of \$13,874,314 for the Solano County Water Agency in fiscal year 2015-2016.

I, THOMAS L. PATE, Interim General Manager and Secretary to the Board of Directors of the Solano County Water Agency, do hereby certify that the foregoing resolution was regularly introduced, passed and adopted by said Board of Directors, at a regular meeting thereof held on the 11th day of June 2015, by the following vote:

Ayes:

Noes:

Abstain:

Absent:

Thomas L. Pate
Interim General Manager & Secretary to
the Solano County Water Agency

ACTION OF
SOLANO COUNTY WATER AGENCY

DATE: June 11, 2015

SUBJECT: Mitigated Negative Declaration for the NAWCA 3 – Lower Putah Creek Floodplain Restoration Project

RECOMMENDATION:

Adopt Mitigated Negative Declaration for Lower Putah Creek Coordinating Committee’s (LPCCC) North American Wetlands Conservation Act 3 – Lower Putah Creek Floodplain Restoration project.

FINANCIAL IMPACT:

None. Project is funded by a Federal grant to the California Waterfowl Association. The LPCCC resources are reimbursable by the grant.

BACKGROUND:

This project is a joint effort between the LPCCC and California Waterfowl. California Waterfowl obtained a Federal grant through the North American Wetlands Conservation Act. The project’s Federal grant funding can be used to match State grant funding for future LPCCC projects. The LPCCC will be performing some site work and assisting with project permitting. The project requires coverage under multiple State and Federal permits. SCWA is the agent for the LPCCC for permitting, thus the need for SCWA to approve the Negative Declaration.

The purpose of the project is to improve fish and wildlife habitat by restoring a functional flood plain to approximately 2,900 linear feet of bank along Lower Putah Creek. The existing floodplain will be graded to a 1-2 percent slope, beginning approximately two feet above low-flow water surface elevation. This re-contouring will help to centralize flood flows within the main channel, thus reducing bank erosion and associated water quality degradation.

Recommended:  ☒ Continued on Next Page
Thomas L. Pate, Interim General Manager

☐ Approved as recommended ☐ Other (see below)

Modification to Recommendation and/or other actions:

I, Thomas L. Pate, Interim General Manager and Secretary to the Solano County Water Agency, do hereby certify that the foregoing action was regularly introduced, passed, and adopted by said Board of Directors at a regular meeting thereof held on June 11, 2015 by the following vote.

Ayes:

Noes:

Abstain:

Absent:

Thomas L. Pate
Interim General Manager & Secretary to the
Solano County Water Agency

The project will also fill and narrow over-widened segments of the low-flow channel, including filling a branch of the braided low-flow channel that is undercutting an embankment that supports Putah Creek Road. Invasive weeds within the project area will be removed, and native vegetation will be installed throughout the new floodplain. A side channel and spawning gravel will also be installed.

The Negative Declaration, less the cultural resources report, is attached. The cultural resources report is available upon request.

SOLANO COUNTY WATER AGENCY

INITIAL STUDY AND MITIGATED NEGATIVE DECLARATION

NAWCA 3 – LOWER PUTAH CREEK FLOODPLAIN
RESTORATION

3/25/2015

Table of Contents

Project Information	2
Environmental Factors Potentially Affected	3
Project Description	4
Photos	5
Maps	7
Environmental Checklist	9
I. Aesthetics	9
II. Agricultural and Forestry Resources	10
III. Air Quality	11
IV. Biological Resources	12
V. Cultural Resources	14
VI. Geology and Soils	14
VII. Greenhouse Gas Emissions	16
VIII. Hazards and Hazardous Materials	16
IX. Hydrology and Water Quality	17
X. Land Use and Planning	29
XI. Mineral Resources	20
XII. Noise	20
XIII. Population and Housing	21
XIV. Public Services	22
XV. Recreation	22
XVI. Transport/Traffic	23
XVII. Utilities and Service Systems	24
XVIII. Mandatory Finding of Significance	25
Mitigation Measures	25
References	36
Appendix	30

Project Information

1. Project title: North American Wetlands Conservation Act 3 – Lower Putah Creek Floodplain Restoration
2. Lead agency name and address: Solano County Water Agency, 810 Vaca Valley Parkway, Suite 203, Vacaville, CA 95688.
3. Contact person and phone number: Mark Snyder, (707) 455-1108
4. Project location: Lower Putah Creek, south of City of Winters and adjacent to Interstate 505.
5. Project sponsor's name and address: Solano County Water Agency, 810 Vaca Valley Parkway, Suite 203, Vacaville, CA 95688.
6. General plan designation: Open Space (Solano County; City of Winters)
7. Zoning: Open Space (Solano County; City of Winters)
8. Description of project: The proposed project is divided into two phases. Phase 1 will focus on the south side of the main channel, and Phase 2 will focus on the north side of the main channel. Both phases will recontour the floodplain and fill portions of the existing low-flow channel. A side channel will be created during Phase 1. Spawning gravels will be added to the constructed side channel, and native vegetation will be installed throughout the recontoured floodplain.
9. Surrounding land uses and setting: Briefly describe the project's surroundings:
The project is currently surrounded by agriculture, rural and suburban residential, business/industrial park, and highway service commercial.
10. Other public agencies whose approval is required (e.g., permits, financing approval, or participation agreement.): California Department of Fish and Wildlife, Central Valley Regional Water Quality Control Board, Central Valley Flood Protection Board, Solano County, City of Winters, Caltrans, Army Corps of Engineers, United States Fish and Wildlife Service, and National Oceanic and Atmospheric Administration Fisheries

Environmental Factors Potentially Affected

The environmental factors checked below would be potentially affected by this project, involving at least one impact that is a "Potentially Significant Impact" as indicated by the checklist on the following pages.

- | | | |
|---|---|---|
| <input type="checkbox"/> Aesthetics | <input type="checkbox"/> Agriculture and Forestry Resources | <input type="checkbox"/> Air Quality |
| <input type="checkbox"/> Biological Resources | <input type="checkbox"/> Cultural Resources | <input type="checkbox"/> Geology / Soils |
| <input type="checkbox"/> Greenhouse Gas Emissions | <input type="checkbox"/> Hazards & Hazardous Materials | <input type="checkbox"/> Hydrology / Water Quality |
| <input type="checkbox"/> Land Use / Planning | <input type="checkbox"/> Mineral Resources | <input type="checkbox"/> Noise |
| <input type="checkbox"/> Population / Housing | <input type="checkbox"/> Public Services | <input type="checkbox"/> Recreation |
| <input type="checkbox"/> Transportation/Traffic | <input type="checkbox"/> Utilities / Service Systems | <input type="checkbox"/> Mandatory Findings of Significance |

DETERMINATION: (To be completed by the Lead Agency)

On the basis of this initial evaluation:


☐ I find that the proposed project COULD NOT have a significant effect on the environment, and a NEGATIVE DECLARATION will be prepared.

☒ I find that although the proposed project could have a significant effect on the environment, there will not be a significant effect in this case because revisions in the project have been made by or agreed to by the project proponent. A MITIGATED NEGATIVE DECLARATION will be prepared.

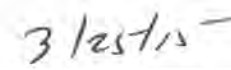
☐ I find that the proposed project MAY have a significant effect on the environment, and an ENVIRONMENTAL IMPACT REPORT is required.

☐ I find that the proposed project MAY have a "potentially significant impact" or "potentially significant unless mitigated" impact on the environment, but at least one effect 1) has been adequately analyzed in an earlier document pursuant to applicable legal standards, and 2) has been addressed by mitigation measures based on the earlier analysis as described on attached sheets. An ENVIRONMENTAL IMPACT REPORT is required, but it must analyze only the effects that remain to be addressed.

☐ I find that although the proposed project could have a significant effect on the environment, because all potentially significant effects (a) have been analyzed adequately in an earlier EIR or NEGATIVE DECLARATION pursuant to applicable standards, and (b) have been avoided or mitigated pursuant to that earlier EIR or NEGATIVE DECLARATION, including revisions or mitigation measures that are imposed upon the proposed project, nothing further is required.



Signature



Date

Signature

Date

Project Description

Purpose:

The purpose of the project is to improve fish and wildlife habitat in Lower Putah Creek, primarily by restoring natural form and function to the creek's channel and floodplain. Once complete, the project will reduce bank erosion and water temperatures, and promote the establishment of native vegetation.

Setting:

Lower Putah Creek is defined as the 23-mile stream segment located between the Putah Diversion Dam, near the City of Winters, and Putah Creek's confluence to the Yolo Bypass, near the City of West Sacramento. Lower Putah Creek is a perennial stream consisting primarily of a mixed riparian forest. Common native tree species include cottonwood, valley oak, Oregon ash, Goodding's willow, arroyo willow, white alder, and box elder. Common shrub species include blue elderberry, poison oak, wild rose, wild grape, and mulefat. Common invasive trees species include eucalyptus, tree-of-heaven, Himalayan blackberry, and giant reed.

The NAWCA 3 – Lower Putah Creek Floodplain Restoration (NAWCA3) project will continue the work of the Winters Putah Creek Park Channel Realignment project (WPCPCR), and it is contiguous to Phase 2 of the WPCPCR project that was completed in 2011. The NAWCA3 project is scheduled for summer 2015, and the project will have two phases.*

Phase 1 Primary Activities:

- Grade the existing floodplain to a uniform 1-2 percent slope, starting from approximately 18 inches above low-flow water surface elevation
- Fill south branch of split low-flow channel that runs against the south bank
- Create side channel with spawning gravels
- Control invasive plants
- Native vegetation installation

Phase 2 Primary Activities:

- Grade the existing floodplain to a uniform 1-2 percent slope, starting from approximately 2 feet above low-flow water surface elevation
- Fill over-widened north branch of split low-flow channel
- Narrow over-widened north branch of split low-flow channel and add root wad revetments
- Control invasive plants
- Native vegetation installation

* The parcel associated with Phase 2 is currently locked in sale negotiations, and construction of Phase 2 may require an agreement with the new landowner. The project is divided into two independent phases to allow Phase 1 to proceed without a landowner agreement for the Phase 2 parcel. Construction of Phase 1 and 2 may occur concurrently, if landowner agreements are executed by the start of construction. Phase 2 could be postponed indefinitely, if landowner agreements are not executed before the project's grant funding expires in March 2016.

Photos

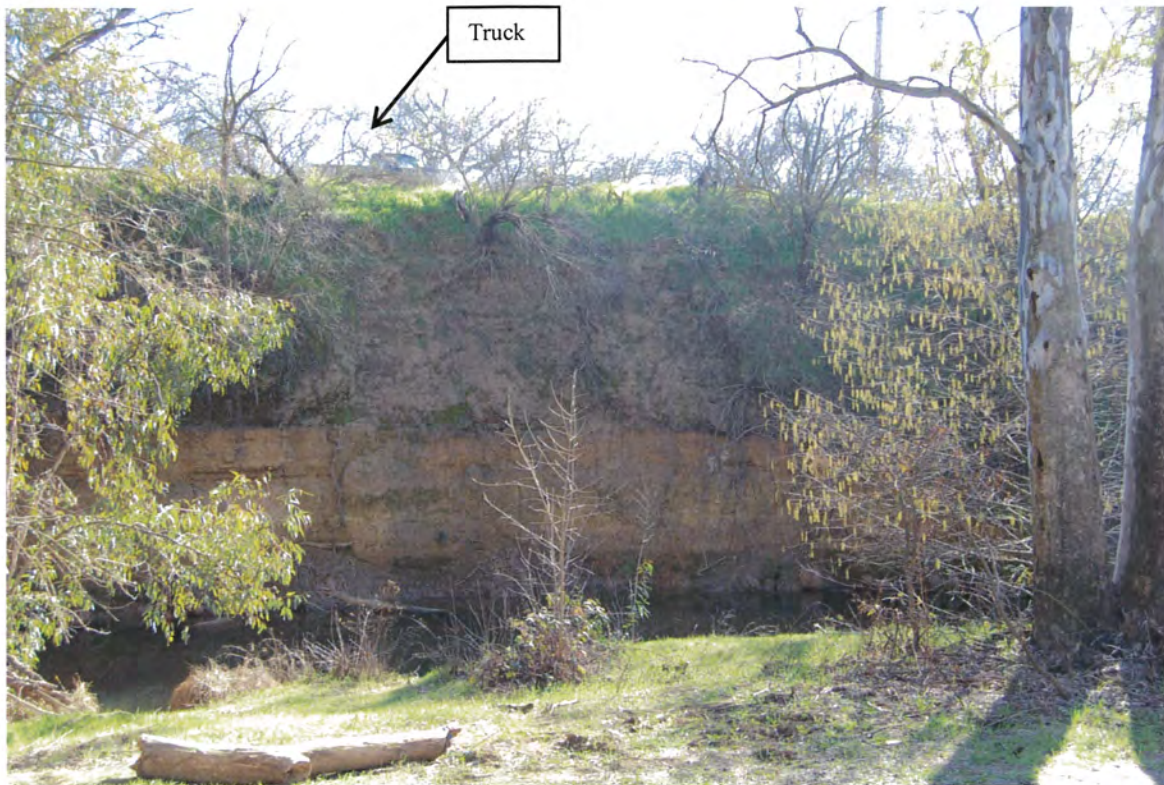


Photo 1 – Looking south at bank erosion at Phase 1. Notice truck traveling along Putah Creek Rd.



Photo 2 – Looking southwest at bank erosion shown in Photo 1. This is the southern branch of low-flow channel that will be filled during Phase 1.

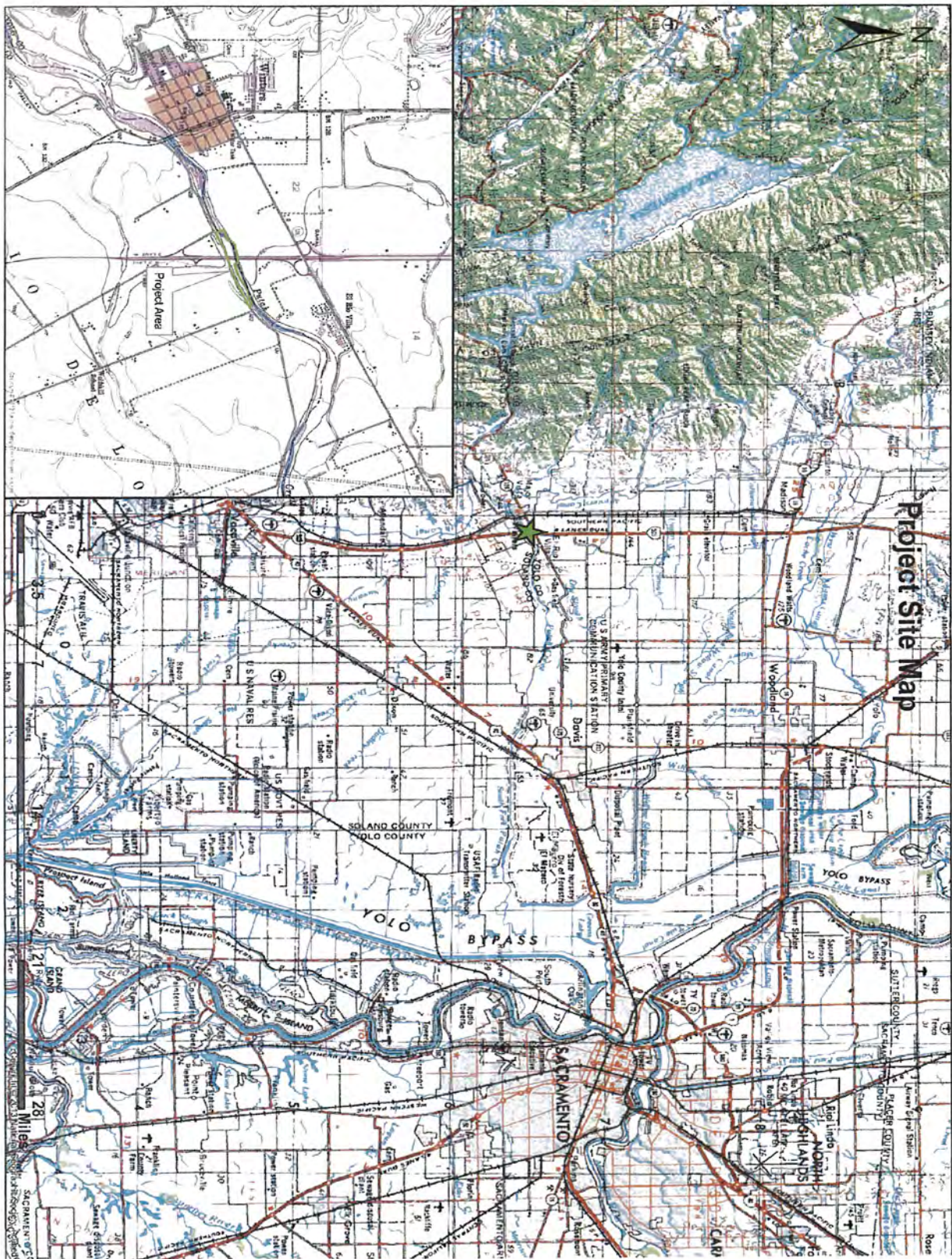


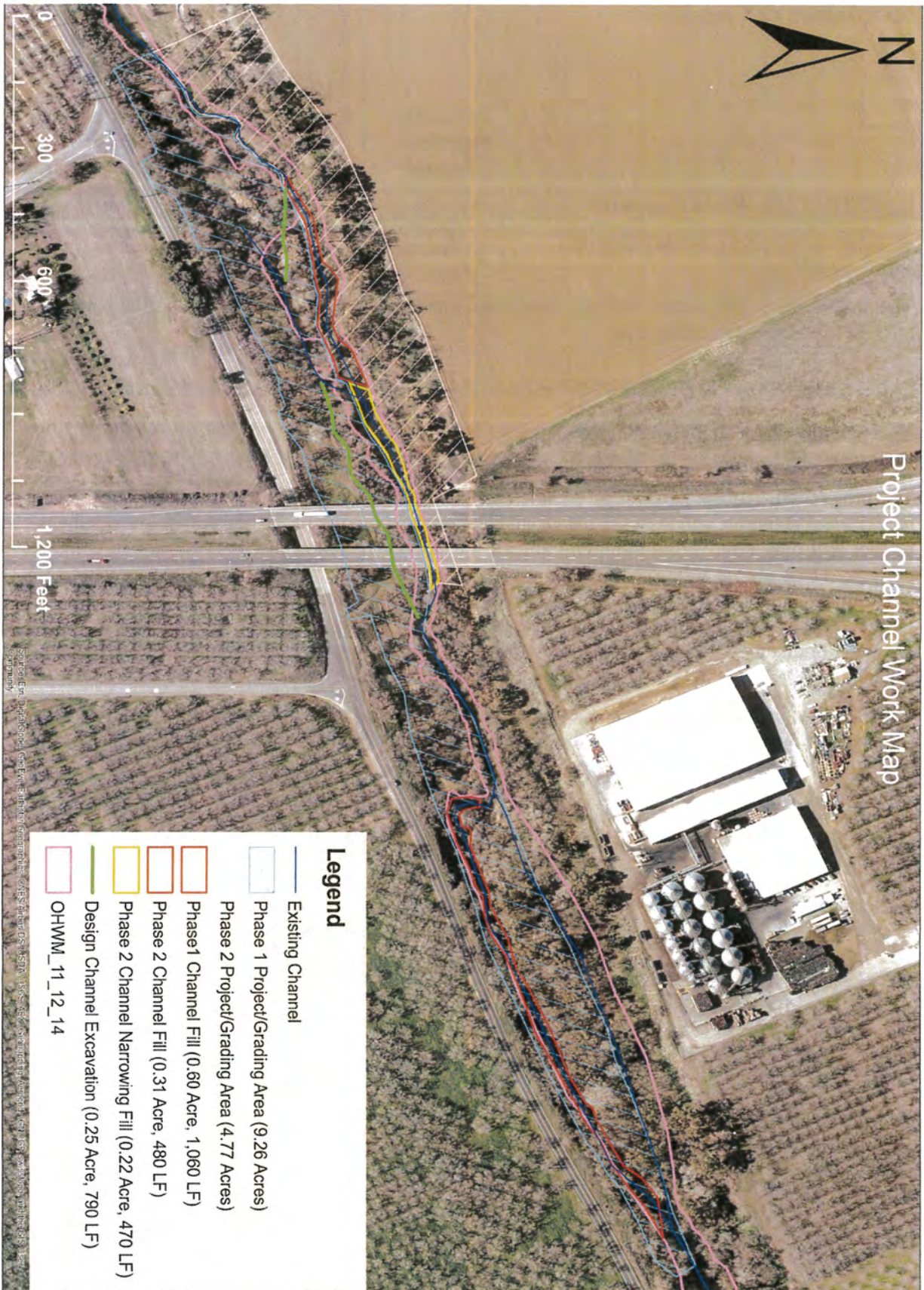
Photo 3 – Looking east at the over-widened low-flow channel and the I-505 bridge in the background. Phase 2 will narrow this segment of channel.



Photo 4 – Looking northeast at the south side floodplain and the I-505 bridge. A side channel with spawning gravel will be installed in this area of the floodplain during Phase 1.

Maps





Environmental Checklist

	Potentially Significant Impact	Less Than Significant with Mitigation Incorporated	Less Than Significant Impact	No Impact
I. AESTHETICS. Would the project:				
a) Have a substantial adverse effect on a scenic vista?	<input type="checkbox"/>	<input type="checkbox"/>	<input type="checkbox"/>	X
The project site is not located within a designated scenic vista, and the project is located below the line of sight from the surrounding area.				
b) Substantially damage scenic resources, including, but not limited to, trees, rock outcroppings, and historic buildings within a state scenic highway?	<input type="checkbox"/>	<input type="checkbox"/>	X	<input type="checkbox"/>
The project will require removal of some existing vegetation within the project area, but the project's revegetation activities will increase the visual character and quality of the site and its surroundings. The project will only remove the minimum amount of native vegetation that is necessary to complete the project. There are no state scenic highways near the project site (CA Dept. of Transportation [DOT], California Scenic Highway Program 2015).				
c) Substantially degrade the existing visual character or quality of the site and its surroundings?	<input type="checkbox"/>	<input type="checkbox"/>	X	<input type="checkbox"/>
The project will temporarily reduce the visual character of the site, as some existing vegetation must be removed for the project to occur, but the project's revegetation activities will ultimately increase the visual character and quality of the site and its surroundings.				
d) Create a new source of substantial light or glare which would adversely affect day or nighttime views in the area?	<input type="checkbox"/>	<input type="checkbox"/>	<input type="checkbox"/>	X
The project will not create new sources of light or glare.				

	Potentially Significant Impact	Less Than Significant with Mitigation Incorporated	Less Than Significant Impact	No Impact
<p>II. AGRICULTURE AND FORESTRY RESOURCES. In determining whether impacts to agricultural resources are significant environmental effects, lead agencies may refer to the California Agricultural Land Evaluation and Site Assessment Model (1997) prepared by the California Dept. of Conservation as an optional model to use in assessing impacts on agriculture and farmland. In determining whether impacts to forest resources, including timberland, are significant environmental effects, lead agencies may refer to information compiled by the California Department of Forestry and Fire Protection regarding the state's inventory of forest land, including the Forest and Range Assessment Project and the Forest Legacy Assessment project; and forest carbon measurement methodology provided in Forest Protocols adopted by the California Air Resources Board. Would the project:</p>				
a) Convert Prime Farmland, Unique Farmland, or Farmland of Statewide Importance (Farmland), as shown on the maps prepared pursuant to the Farmland Mapping and Monitoring Program of the California Resources Agency, to non-agricultural use?	<input type="checkbox"/>	<input type="checkbox"/>	<input type="checkbox"/>	X
<p>The CA Dept. of Conservation, Farmland Mapping and Monitoring Program [FMMP] (2015) has classified part of the project area as Unique Farmland; however, the classification appears to be inaccurate, as the project area is in a riparian corridor that has not been farmed in the last four years. Prime Farmland is located adjacent to the project area. The project will not convert any type of farmland to non-agricultural uses.</p>				
b) Conflict with existing zoning for agricultural use, or a Williamson Act contract?	<input type="checkbox"/>	<input type="checkbox"/>	<input type="checkbox"/>	X
<p>The project does not conflict with the Williamson Act or existing zoning for agricultural use.</p>				

	Potentially Significant Impact	Less Than Significant with Mitigation Incorporated	Less Than Significant Impact	No Impact
c) Conflict with existing zoning for, or cause rezoning of, forest land (as defined in Public Resources Code section 12220(g)), timberland (as defined by Public Resources Code section 4526), or timberland zoned Timberland Production (as defined by Government Code section 51104(g))?	<input type="checkbox"/>	<input type="checkbox"/>	<input type="checkbox"/>	X

The Project will not impact zoning.

d) Result in the loss of forest land or conversion of forest land to non-forest use?	<input type="checkbox"/>	<input type="checkbox"/>	<input type="checkbox"/>	X
--	--------------------------	--------------------------	--------------------------	---

The project will not result in the loss or conversion of forest land.

e) Involve other changes in the existing environment which, due to their location or nature, could result in conversion of Farmland, to non-agricultural use or conversion of forest land to non-forest use?	<input type="checkbox"/>	<input type="checkbox"/>	<input type="checkbox"/>	X
--	--------------------------	--------------------------	--------------------------	---

The project will not result in the conversion of farmland or forestland.

III. AIR QUALITY. Where available, the significance criteria established by the applicable air quality management or air pollution control district may be relied upon to make the following determinations. Would the project:

a) Conflict with or obstruct implementation of the applicable air quality plan?	<input type="checkbox"/>	<input type="checkbox"/>	<input type="checkbox"/>	X
---	--------------------------	--------------------------	--------------------------	---

The project area falls within the jurisdiction of the Yolo-Solano Air Quality Management District (Yolo-Solano Air Quality Management District, 2015). The project will not conflict or obstruct implementation of the applicable air quality plan.

b) Violate any air quality standard or contribute substantially to an existing or projected air quality violation?	<input type="checkbox"/>	X	<input type="checkbox"/>	<input type="checkbox"/>
--	--------------------------	---	--------------------------	--------------------------

Both Yolo and Solano counties are non-attainment areas for Ozone and PM10 under the State standard, and the Ozone 8-hour National standard. All of Solano county and part of Yolo county are non-attainment areas for the National PM2.5 standard. (CA Environmental Protection Area, Air Resources Board, 2015). Dust and exhaust emissions emitted during construction may impact air quality. Mitigation measure AQ-1 will reduce the potential impacts to less than significant.

	Potentially Significant Impact	Less Than Significant with Mitigation Incorporated	Less Than Significant Impact	No Impact
c) Result in a cumulatively considerable net increase of any criteria pollutant for which the project region is non-attainment under an applicable federal or state ambient air quality standard (including releasing emissions which exceed quantitative thresholds for ozone precursors)?	<input type="checkbox"/>	<input type="checkbox"/>	X	<input type="checkbox"/>

The project will not exceed the Yolo Solano Air Quality Management District's thresholds, and will have a less than significant impact on the regions non-attainment criteria pollutants. Mitigation measure AQ-1 will further reduce the impacts.

d) Expose sensitive receptors to substantial pollutant concentrations?	<input type="checkbox"/>	<input type="checkbox"/>	X	<input type="checkbox"/>
--	--------------------------	--------------------------	---	--------------------------

The nearest sensitive receptors may be located at residential area located approximately 100 feet from the northwest corner of the project area. Impacts from emissions and dust generated from construction activities will be short-term, intermittent, and reduced by mitigation measure AQ-1.

e) Create objectionable odors affecting a substantial number of people?	<input type="checkbox"/>	<input type="checkbox"/>	<input type="checkbox"/>	X
---	--------------------------	--------------------------	--------------------------	---

The project will not create objectionable odors that would affect a significant number of people.

IV. BIOLOGICAL RESOURCES:

Would the project:

a) Have a substantial adverse effect, either directly or through habitat modifications, on any species identified as a candidate, sensitive, or special status species in local or regional plans, policies, or regulations, or by the California Department of Fish and Game or U.S. Fish and Wildlife Service?	<input type="checkbox"/>	X	<input type="checkbox"/>	<input type="checkbox"/>
--	--------------------------	---	--------------------------	--------------------------

The project's purpose is to improve habitat value by restoring a riparian area that has suitable habitat for special status and candidate species. California Department of Fish and Wildlife's (CDFW) California Natural Diversity Database (2015), shows recorded sightings for the following special status species within a five mile radius of the project area: *Buteo swainsoni* (Swainson's Hawk), *California macrophylla* (round-leaved filaree), *Athene cunicularia* (burrowing owl), *Brachinecta lynchi* (vernal pool fairy shrimp), *Actinemys marmorata marmorata* (northwestern pond turtle), *Navarretia leucocephala* spp. *Bakeri* (Baker's navarretia), *Desmocerus californicus dimorphus* (valley elderberry longhorn beetle). Habitat for the following species exists within the project area: Swainson's hawk, valley elderberry longhorn beetle, and northwestern pond turtle. The National Marine Fisheries Service (2015) has designated two evolutionary significant unit species in the project area: *Oncorhynchus tshawytscha* (Chinook salmon, fall/late-run) and *Oncorhynchus mykiss* (Central Valley steelhead); however, steelhead have not been positively identified in lower Putah Creek, and Chinook salmon will likely have left lower Putah Creek during early spring, prior to the start of construction. Existing

	Potentially Significant Impact	Less Than Significant with Mitigation Incorporated	Less Than Significant Impact	No Impact
agricultural impoundments block fish access within the system during April through November. Impacts to special status species will be less than significant with mitigation measures BR-1 through BR-5 incorporated into the project.				

b) Have a substantial adverse effect on any riparian habitat or other sensitive natural community identified in local or regional plans, policies, regulations or by the California Department of Fish and Game or US Fish and Wildlife Service?

<input type="checkbox"/>	X	<input type="checkbox"/>	<input type="checkbox"/>
--------------------------	---	--------------------------	--------------------------

The project's grading and vegetation activities will temporarily disturb fish and wildlife habitat, but the adverse effect will be less than significant with mitigation measures BR-1 through BR-5 incorporated into the project. The project is designed to ultimately increase fish and wildlife habitat value.

c) Have a substantial adverse effect on federally protected wetlands as defined by Section 404 of the Clean Water Act (including, but not limit to, marsh, vernal pool, coastal, etc.) through direct removal, filling, hydrological interruption, or other means?

<input type="checkbox"/>	<input type="checkbox"/>	<input type="checkbox"/>	X
--------------------------	--------------------------	--------------------------	---

The project area was surveyed for wetlands, and a draft report was sent to the United States Army Corps of Engineers (USACE) for approval (BSK Associates, 2014). No wetlands were found within the project area.

d) Interfere substantially with the movement of any native resident or migratory fish or wildlife species or with established native resident or migratory wildlife corridors, or impede the use of native wildlife nursery sites?

<input type="checkbox"/>	<input type="checkbox"/>	X	<input type="checkbox"/>
--------------------------	--------------------------	---	--------------------------

The project may be a temporary disturbance to fish and wildlife during construction, but it will not substantially impede or block the movement of fish and wildlife through the project site.

e) Conflict with any local policies or ordinances protecting biological resources, such as a tree preservation policy or ordinance?

<input type="checkbox"/>	<input type="checkbox"/>	<input type="checkbox"/>	X
--------------------------	--------------------------	--------------------------	---

The project does not conflict local policies or ordinances protecting biological resources.

	Potentially Significant Impact	Less Than Significant with Mitigation Incorporated	Less Than Significant Impact	No Impact
f) Conflict with the provisions of an adopted Habitat Conservation Plan, Natural Community Conservation Plan, or other approved local, regional, or state habitat conservation plan?	<input type="checkbox"/>	<input type="checkbox"/>	<input type="checkbox"/>	X

The project does not conflict with any habitat or natural community conservation plans.

V. CULTURAL RESOURCES. Would the project:

a) Cause a substantial adverse change in the significance of a historical resource as defined in § 15064.5?	<input type="checkbox"/>	X	<input type="checkbox"/>	<input type="checkbox"/>
---	--------------------------	---	--------------------------	--------------------------

The project area was surveyed for cultural resources and two resources sites were identified (Tremaine, 2015). These site are located near the perimeter of the project area and they will be completely avoided. Mitigation measure CR-1 will be incorporated to address buried cultural resources that may be revealed during work.

b) Cause a substantial adverse change in the significance of an archaeological resource pursuant to § 15064.5?	<input type="checkbox"/>	X	<input type="checkbox"/>	<input type="checkbox"/>
--	--------------------------	---	--------------------------	--------------------------

The project will not change the significance of a known archaeological resource pursuant to § 15064.5. See mitigation measure CR-1.

c) Directly or indirectly destroy a unique paleontological resource or site or unique geologic feature?	<input type="checkbox"/>	X	<input type="checkbox"/>	<input type="checkbox"/>
---	--------------------------	---	--------------------------	--------------------------

The project will not destroy a known unique paleontological resource or site or unique geologic feature. See mitigation measure CR-1.

d) Disturb any human remains, including those interred outside of formal cemeteries?	<input type="checkbox"/>	X	<input type="checkbox"/>	<input type="checkbox"/>
--	--------------------------	---	--------------------------	--------------------------

The project will not disturb any known human remains. See mitigation measure CR-1.

VI. GEOLOGY AND SOILS. Would the project:

a) Expose people or structures to potential substantial adverse effects, including the risk of loss, injury, or death involving:	<input type="checkbox"/>	<input type="checkbox"/>	<input type="checkbox"/>	X
--	--------------------------	--------------------------	--------------------------	---

i) Rupture of a known earthquake fault, as delineated on the most recent Alquist-Priolo Earthquake Fault Zoning Map issued by the State Geologist for the area or based on	<input type="checkbox"/>	<input type="checkbox"/>	<input type="checkbox"/>	X
--	--------------------------	--------------------------	--------------------------	---

	Potentially Significant Impact	Less Than Significant with Mitigation Incorporated	Less Than Significant Impact	No Impact
other substantial evidence of a known fault? Refer to Division of Mines and Geology Special Publication 42.				
ii) Strong seismic ground shaking?	<input type="checkbox"/>	<input type="checkbox"/>	<input type="checkbox"/>	X
iii) Seismic-related ground failure, including liquefaction?	<input type="checkbox"/>	<input type="checkbox"/>	<input type="checkbox"/>	X
iv) Landslides?	<input type="checkbox"/>	<input type="checkbox"/>	<input type="checkbox"/>	X
The project area is not located near an earthquake fault shown on the Alquist-Priola Earthquake Fault Zoning Map, and is located approximately 17 miles from the nearest Earthquake fault, , landslide zone, and liquefaction zone (CA Dept. of Conservation, Geological Survey of CA, 2015).				
b) Result in substantial soil erosion or the loss of topsoil?	<input type="checkbox"/>	<input type="checkbox"/>	X	<input type="checkbox"/>
The project will disturb soil and temporarily increase its susceptibility to erosion. Mitigation measure AQ-1 and BR-5 will reduce soil erosion potential. The project is designed to help reduce the erosive forces of flood flows by creating a more uniform and centralized flood flow.				
c) Be located on a geologic unit or soil that is unstable, or that would become unstable as a result of the project, and potentially result in on- or off-site landslide, lateral spreading, subsidence, liquefaction or collapse?	<input type="checkbox"/>	<input type="checkbox"/>	<input type="checkbox"/>	X
The project is not located on a geologic site or soil that is unstable (U.S. Dept. of Agriculture, Natural Resources Conservation Service, 2015).				
d) Be located on expansive soil, as defined in Table 18-1-B of the Uniform Building Code (1994), creating substantial risks to life or property? The project does not involve buildings.	<input type="checkbox"/>	<input type="checkbox"/>	<input type="checkbox"/>	X
e) Have soils incapable of adequately supporting the use of septic tanks or alternative waste water disposal systems where sewers are not available for the disposal of waste water? The project does not involve septic tanks or the disposal of wastewater.	<input type="checkbox"/>	<input type="checkbox"/>	<input type="checkbox"/>	X

	Potentially Significant Impact	Less Than Significant with Mitigation Incorporated	Less Than Significant Impact	No Impact
--	--------------------------------------	---	------------------------------------	--------------

VII. GREENHOUSE GAS EMISSIONS.

Would the project:

- a) Generate greenhouse gas emissions, either directly or indirectly, that may have a significant impact on the environment?

☐ ☐ X ☐

The project will temporarily generate greenhouse gas emissions during construction through the normal operation of construction equipment. The construction equipment will abide by all applicable state and federal regulation regarding the operation of construction equipment. The project's revegetation component will result in a reduction in greenhouse gases. Mitigation measure AQ-1 will reduce the project's greenhouse gas emissions.

- b) Conflict with an applicable plan, policy or regulation adopted for the purpose of reducing the emissions of greenhouse gases?

☐ ☐ ☐ X

The project will not conflict with any applicable greenhouse gas emission policy, plan, or regulation.

VIII. HAZARDS AND HAZARDOUS MATERIALS. Would the project:

- a) Create a significant hazard to the public or the environment through the routine transport, use, or disposal of hazardous materials?

☐ ☐ X ☐

The project will use construction equipment that contains materials that are required for normal operation, such as fuel and oil. Herbicides will be used in accordance with their labels to control weeds. Mitigation Measure HHM-1 will reduce impacts to less than significant.

- b) Create a significant hazard to the public or the environment through reasonably foreseeable upset and accident conditions involving the release of hazardous materials into the environment?

☐ ☐ ☐ X

The project will not release hazardous materials into the environment.

- c) Emit hazardous emissions or handle hazardous or acutely hazardous materials, substances, or waste within one-quarter mile of an existing or proposed school?

☐ ☐ ☐ X

The project is not located within 0.25 mile of a school (CA Dept. of Education, 2015).

	Potentially Significant Impact	Less Than Significant with Mitigation Incorporated	Less Than Significant Impact	No Impact
d) Be located on a site which is included on a list of hazardous materials sites compiled pursuant to Government Code Section 65962.5 and, as a result, would it create a significant hazard to the public or the environment?	<input type="checkbox"/>	<input type="checkbox"/>	<input type="checkbox"/>	X

The project is not located on a hazardous materials site (CA Dept. of Toxic Substance Control, 2015).

e) For a project located within an airport land use plan or, where such a plan has not been adopted, within two miles of a public airport or public use airport, would the project result in a safety hazard for people residing or working in the project area?	<input type="checkbox"/>	<input type="checkbox"/>	<input type="checkbox"/>	X
--	--------------------------	--------------------------	--------------------------	---

The project is not located within two miles of a public or public use airport (CA Dept. of Transportation, Division of Aeronautics [DA], 2015).

f) For a project within the vicinity of a private airstrip, would the project result in a safety hazard for people residing or working in the project area?	<input type="checkbox"/>	<input type="checkbox"/>	<input type="checkbox"/>	X
---	--------------------------	--------------------------	--------------------------	---

The project is not in the vicinity of a private airstrip (DA, 2015).

g) Impair implementation of or physically interfere with an adopted emergency response plan or emergency evacuation plan?	<input type="checkbox"/>	<input type="checkbox"/>	<input type="checkbox"/>	X
---	--------------------------	--------------------------	--------------------------	---

The project will not interfere with an emergency response or evacuation plan.

h) Expose people or structures to a significant risk of loss, injury or death involving wildland fires, including where wildlands are adjacent to urbanized areas or where residences are intermixed with wildlands?	<input type="checkbox"/>	X	<input type="checkbox"/>	<input type="checkbox"/>
--	--------------------------	---	--------------------------	--------------------------

Dry grasses and other vegetation may be located throughout the project site. Mitigation measure HHM-2 will reduce the risk of fire and the risk of loss, injury, or death involving fires.

IX. HYDROLOGY AND WATER QUALITY. Would the project:

a) Violate any water quality standards or waste discharge requirements?	<input type="checkbox"/>	<input type="checkbox"/>	X	<input type="checkbox"/>
---	--------------------------	--------------------------	---	--------------------------

	Potentially Significant Impact	Less Than Significant with Mitigation Incorporated	Less Than Significant Impact	No Impact
The project may cause temporary and intermittent increases in turbidity when in-water work requires the work area to be isolated from flowing water to protect water quality, or when work complete and flowing water is redirected to the previously isolated work areas. The project will comply with all applicable state and federal permit requirements regarding water quality and discharge requirements.				
b) Substantially deplete groundwater supplies or interfere substantially with groundwater recharge such that there would be a net deficit in aquifer volume or a lowering of the local groundwater table level (e.g., the production rate of pre-existing nearby wells would drop to a level which would not support existing land uses or planned uses for which permits have been granted)?	<input type="checkbox"/>	<input type="checkbox"/>	X	<input type="checkbox"/>
Water will be used for dust control during construction, and a sprinkler/drip irrigation system will be used to help establish the native planting and grasses. The project will not significantly impact groundwater supply or groundwater recharge.				
c) Substantially alter the existing drainage pattern of the site or area, including through the alteration of the course of a stream or river, in a manner which would result in substantial erosion or siltation on- or off-site?	<input type="checkbox"/>	<input type="checkbox"/>	X	<input type="checkbox"/>
The project both fills and creates segments of the low-flow channels, but does not change the course of the main channel. The project is designed to reduce bank erosion during high discharge events.				
d) Substantially alter the existing drainage pattern of the site or area, including through the alteration of the course of a stream or river, or substantially increase the rate or amount of surface runoff in a manner which would result in flooding on- or off-site?	<input type="checkbox"/>	<input type="checkbox"/>	X	<input type="checkbox"/>
The project is not designed to substantially alter the existing drainage pattern of the project site, or substantially increase surface runoff.				
e) Create or contribute runoff water which would exceed the capacity of existing or planned stormwater drainage systems or provide substantial additional sources of polluted runoff?	<input type="checkbox"/>	<input type="checkbox"/>	<input type="checkbox"/>	X

	Potentially Significant Impact	Less Than Significant with Mitigation Incorporated	Less Than Significant Impact	No Impact
--	--------------------------------------	---	------------------------------------	--------------

The project will not result in polluted runoff or have an impact on the existing or planned stormwater drainage systems.

f) Otherwise substantially degrade water quality?	<input type="checkbox"/>	<input type="checkbox"/>	X	<input type="checkbox"/>
---	--------------------------	--------------------------	---	--------------------------

The project will comply with all applicable state and federal permits regarding water quality, and will not result in substantial water quality degradation. The project is designed to improve post-project water quality by reducing bank erosion.

g) Place housing within a 100-year flood hazard area as mapped on a federal Flood Hazard Boundary or Flood Insurance Rate Map or other flood hazard delineation map?	<input type="checkbox"/>	<input type="checkbox"/>	<input type="checkbox"/>	X
--	--------------------------	--------------------------	--------------------------	---

The project will not place housing within the 100-year flood hazard area.

h) Place within a 100-year flood hazard area structures which would impede or redirect flood flows?	<input type="checkbox"/>	<input type="checkbox"/>	<input type="checkbox"/>	X
---	--------------------------	--------------------------	--------------------------	---

Flood impeding or redirecting structures will not be placed within the 100-year floodplain.

i) Expose people or structures to a significant risk of loss, injury or death involving flooding, including flooding as a result of the failure of a levee or dam?	<input type="checkbox"/>	<input type="checkbox"/>	<input type="checkbox"/>	X
--	--------------------------	--------------------------	--------------------------	---

The project will not expose people or structures to flooding, and does not involve a levee or dam

j) Inundation by seiche, tsunami, or mudflow?	<input type="checkbox"/>	<input type="checkbox"/>	<input type="checkbox"/>	X
---	--------------------------	--------------------------	--------------------------	---

The project will not expose people to structures to seiche, tsunami, or mudflow.

X. LAND USE AND PLANNING. Would the project:

a) Physically divide an established community?	<input type="checkbox"/>	<input type="checkbox"/>	<input type="checkbox"/>	X
--	--------------------------	--------------------------	--------------------------	---

The project will not alter an established community.

	Potentially Significant Impact	Less Than Significant with Mitigation Incorporated	Less Than Significant Impact	No Impact
b) Conflict with any applicable land use plan, policy, or regulation of an agency with jurisdiction over the project (including, but not limited to the general plan, specific plan, local coastal program, or zoning ordinance) adopted for the purpose of avoiding or mitigating an environmental effect?	<input type="checkbox"/>	<input type="checkbox"/>	<input type="checkbox"/>	X
The project will not conflict with any applicable lands use plan, policy or regulation.				

c) Conflict with any applicable habitat conservation plan or natural community conservation plan?	<input type="checkbox"/>	<input type="checkbox"/>	<input type="checkbox"/>	X
The project will not conflict with an applicable habitat conservation plan or natural community plan.				

XI. MINERAL RESOURCES. Would the project:

a) Result in the loss of availability of a known mineral resource that would be of value to the region and the residents of the state?	<input type="checkbox"/>	<input type="checkbox"/>	<input type="checkbox"/>	X
--	--------------------------	--------------------------	--------------------------	---

The project will not result in the loss of availability of known mineral resources (CA Dept. of Conservation, 2015).

b) Result in the loss of availability of a locally-important mineral resource recovery site delineated on a local general plan, specific plan or other land use plan?	<input type="checkbox"/>	<input type="checkbox"/>	<input type="checkbox"/>	X
---	--------------------------	--------------------------	--------------------------	---

The project will not result in the loss of locally important mineral resources recovery site.

XII. NOISE -- Would the project result in:

a) Exposure of persons to or generation of noise levels in excess of standards established in the local general plan or noise ordinance, or applicable standards of other agencies?	<input type="checkbox"/>	X	<input type="checkbox"/>	<input type="checkbox"/>
---	--------------------------	---	--------------------------	--------------------------

The project will have temporary and intermittent increases to noise levels during construction activities. The City of Winters General Plan (1992) places a 90db noise limit (measured at 50 feet from the source) for construction activities, and the activities are limited to weekdays from 7AM-7PM. Mitigation measure N-1 will reduce noise impacts to less than significant.

	Potentially Significant Impact	Less Than Significant with Mitigation Incorporated	Less Than Significant Impact	No Impact
b) Exposure of persons to or generation of excessive groundborne vibration or groundborne noise levels?	<input type="checkbox"/>	<input type="checkbox"/>	X	<input type="checkbox"/>

Of the variety of construction equipment that is likely to be operated at the project site, large bulldozers will have the most ground borne vibration levels. The calculated vibration for the large dozer in relation to the project sites nearest building (100 feet) and potential sensitive receptor, is 0.01 peak particle velocity (in./sec.). This value is less than vibration damage threshold criterion of 0.20 in/sec for fragile buildings, and less than the 0.012 in./sec. “slightly perceptible” human response threshold for steady state vibration (CA Dept. of Transportation, 2004).

c) A substantial permanent increase in ambient noise levels in the project vicinity above levels existing without the project?	<input type="checkbox"/>	<input type="checkbox"/>	<input type="checkbox"/>	X
--	--------------------------	--------------------------	--------------------------	---

The project will not result in a permanent increase in noise levels.

d) A substantial temporary or periodic increase in ambient noise levels in the project vicinity above levels existing without the project?	<input type="checkbox"/>	X	<input type="checkbox"/>	<input type="checkbox"/>
--	--------------------------	---	--------------------------	--------------------------

See Response to XII-a, and mitigation measure N-1.

e) For a project located within an airport land use plan or, where such a plan has not been adopted, within two miles of a public airport or public use airport, would the project expose people residing or working in the project area to excessive noise levels?	<input type="checkbox"/>	<input type="checkbox"/>	<input type="checkbox"/>	X
---	--------------------------	--------------------------	--------------------------	---

The project is not located within an airport land use plan, or within two miles of a public airport (DA, 2015).

f) For a project within the vicinity of a private airstrip, would the project expose people residing or working in the project area to excessive noise levels?	<input type="checkbox"/>	<input type="checkbox"/>	<input type="checkbox"/>	X
--	--------------------------	--------------------------	--------------------------	---

There are no private airstrips in the vicinity of the project site (DA, 2015).

XIII. POPULATION AND HOUSING.

Would the project:

a) Induce substantial population growth in an area, either directly (for example, by proposing new homes and businesses) or indirectly (for example, through extension of roads or other infrastructure)?	<input type="checkbox"/>	<input type="checkbox"/>	<input type="checkbox"/>	X
---	--------------------------	--------------------------	--------------------------	---

The project does not involve housing or infrastructure, and will not impact population growth.

	Potentially Significant Impact	Less Than Significant with Mitigation Incorporated	Less Than Significant Impact	No Impact
b) Displace substantial numbers of existing housing, necessitating the construction of replacement housing elsewhere?	<input type="checkbox"/>	<input type="checkbox"/>	<input type="checkbox"/>	X

The project will not impact housing.

c) Displace substantial numbers of people, necessitating the construction of replacement housing elsewhere?	<input type="checkbox"/>	<input type="checkbox"/>	<input type="checkbox"/>	X
---	--------------------------	--------------------------	--------------------------	---

The project will not displace people.

XIV. PUBLIC SERVICES.

a) Would the project result in substantial adverse physical impacts associated with the provision of new or physically altered governmental facilities, need for new or physically altered governmental facilities, the construction of which could cause significant environmental impacts, in order to maintain acceptable service ratios, response times or other performance objectives for any of the public services:	<input type="checkbox"/>	<input type="checkbox"/>	<input type="checkbox"/>	X
---	--------------------------	--------------------------	--------------------------	---

Fire protection?	<input type="checkbox"/>	<input type="checkbox"/>	<input type="checkbox"/>	X
Police protection?	<input type="checkbox"/>	<input type="checkbox"/>	<input type="checkbox"/>	X
Schools?	<input type="checkbox"/>	<input type="checkbox"/>	<input type="checkbox"/>	X
Parks?	<input type="checkbox"/>	<input type="checkbox"/>	<input type="checkbox"/>	X
Other public facilities?	<input type="checkbox"/>	<input type="checkbox"/>	<input type="checkbox"/>	X

The project will not result in an increase to the service area or demand of public police protection, fire protection, schools, parks, or public facilities.

XV. RECREATION.

a) Would the project increase the use of existing neighborhood and regional parks or other recreational facilities such that substantial physical deterioration of the facility would occur or be accelerated?	<input type="checkbox"/>	<input type="checkbox"/>	X	<input type="checkbox"/>
--	--------------------------	--------------------------	---	--------------------------

Winters Putah Creek Nature Park is adjacent to the project site, but the project is not anticipated to significantly increase use of the park.

	Potentially Significant Impact	Less Than Significant with Mitigation Incorporated	Less Than Significant Impact	No Impact
b) Does the project include recreational facilities or require the construction or expansion of recreational facilities which might have an adverse physical effect on the environment? The project will not impact recreational facilities.	<input type="checkbox"/>	<input type="checkbox"/>	<input type="checkbox"/>	X

XVI. TRANSPORTATION/TRAFFIC.

Would the project:

a) Conflict with an applicable plan, ordinance or policy establishing measures of effectiveness for the performance of the circulation system, taking into account all modes of transportation including mass transit and non-motorized travel and relevant components of the circulation system, including but not limited to intersections, streets, highways and freeways, pedestrian and bicycle paths, and mass transit?	<input type="checkbox"/>	<input type="checkbox"/>	X	<input type="checkbox"/>
---	--------------------------	--------------------------	---	--------------------------

The project requires transportation of equipment and materials, which could temporally increase the travel time along the transport route.

b) Conflict with an applicable congestion management program, including, but not limited to level of service standards and travel demand measures, or other standards established by the county congestion management agency for designated roads or highways?	<input type="checkbox"/>	<input type="checkbox"/>	<input type="checkbox"/>	X
--	--------------------------	--------------------------	--------------------------	---

The project will not conflict with an applicable congestion management program.

c) Result in a change in air traffic patterns, including either an increase in traffic levels or a change in location that results in substantial safety risks?	<input type="checkbox"/>	<input type="checkbox"/>	<input type="checkbox"/>	X
---	--------------------------	--------------------------	--------------------------	---

The project will not impact air traffic.

d) Substantially increase hazards due to a design feature (e.g., sharp curves or dangerous intersections) or incompatible uses (e.g., farm equipment)?	<input type="checkbox"/>	<input type="checkbox"/>	<input type="checkbox"/>	X
--	--------------------------	--------------------------	--------------------------	---

The project will not impact transportation design.

	Potentially Significant Impact	Less Than Significant with Mitigation Incorporated	Less Than Significant Impact	No Impact
e) Result in inadequate emergency access? The Project will not impact emergency access.	<input type="checkbox"/>	<input type="checkbox"/>	<input type="checkbox"/>	X
f) Conflict with adopted policies, plans, or programs regarding public transit, bicycle, or pedestrian facilities, or otherwise decrease the performance or safety of such facilities? No impact.	<input type="checkbox"/>	<input type="checkbox"/>	<input type="checkbox"/>	X

XVII. UTILITIES AND SERVICE SYSTEMS.

Would the project:

a) Exceed wastewater treatment requirements of the applicable Regional Water Quality Control Board?

The project will not impact wastewater or wastewater treatment.

b) Require or result in the construction of new water or wastewater treatment facilities or expansion of existing facilities, the construction of which could cause significant environmental effects?

The project does not involve water or wastewater treatment, and has no bearing on the construction or expansion of these types of facilities.

c) Require or result in the construction of new storm water drainage facilities or expansion of existing facilities, the construction of which could cause significant environmental effects?

The project does will not use storm water drainage facilities and will have no bearing on the construction of expansion of these facilities.

d) Have sufficient water supplies available to serve the project from existing entitlements and resources, or are new or expanded entitlements needed?

The project will only require water for dust control during construction, and the initial establishment of native plantings after construction.

	Potentially Significant Impact	Less Than Significant with Mitigation Incorporated	Less Than Significant Impact	No Impact
e) Result in a determination by the wastewater treatment provider which serves or may serve the project that it has adequate capacity to serve the project's projected demand in addition to the provider's existing commitments?	<input type="checkbox"/>	<input type="checkbox"/>	<input type="checkbox"/>	X

The project will have no demand for wastewater treatment.

f) Be served by a landfill with sufficient permitted capacity to accommodate the project's solid waste disposal needs?	<input type="checkbox"/>	<input type="checkbox"/>	<input type="checkbox"/>	X
--	--------------------------	--------------------------	--------------------------	---

The project will generate a small amount of solid waste during construction. The Recology Hay Road solid waste disposal site can accept up to 2,400 tons per day, and will meet the project's solid waste disposal needs (Recology Hay Road, 2015).

g) Comply with federal, state, and local statutes and regulations related to solid waste?	<input type="checkbox"/>	<input type="checkbox"/>	<input type="checkbox"/>	X
---	--------------------------	--------------------------	--------------------------	---

The project will comply with all solid waste regulations.

XVIII. MANDATORY FINDINGS OF SIGNIFICANCE.

a) Does the project have the potential to degrade the quality of the environment, substantially reduce the habitat of a fish or wildlife species, cause a fish or wildlife population to drop below self-sustaining levels, threaten to eliminate a plant or animal community, reduce the number or restrict the range of a rare or endangered plant or animal or eliminate important examples of the major periods of California history or prehistory?	<input type="checkbox"/>	X	<input type="checkbox"/>	<input type="checkbox"/>
--	--------------------------	---	--------------------------	--------------------------

The project is designed to improve fish and wildlife habitat value, but some construction activities, such as grading and vegetation removal, will temporarily impact that habitat. The Biological Resources mitigation measures have been incorporated into the project to reduce impacts to fish and wildlife to less than significant levels. The project will not result in take of special status species.

	Potentially Significant Impact	Less Than Significant with Mitigation Incorporated	Less Than Significant Impact	No Impact
b) Does the project have impacts that are individually limited, but cumulatively considerable? ("Cumulatively considerable" means that the incremental effects of a project are considerable when viewed in connection with the effects of past projects, the effects of other current projects, and the effects of probable future projects)?	<input type="checkbox"/>	<input type="checkbox"/>	X	<input type="checkbox"/>

Past and future habitat restoration projects along Lower Putah Creek are designed to minimize temporary negative impacts, and have only beneficial long-term impacts. As a result, these past and future projects have less than significant cumulative impacts.

c) Does the project have environmental effects which will cause substantial adverse effects on human beings, either directly or indirectly?	<input type="checkbox"/>	<input type="checkbox"/>	<input type="checkbox"/>	X
---	--------------------------	--------------------------	--------------------------	---

The project will not have substantial adverse effect on human beings.

Note: Authority cited: Sections 21083 and 21083.05, Public Resources Code. Reference: Section 65088.4, Gov. Code; Sections 21080(c), 21080.1, 21080.3, 21083, 21083.05, 21083.3, 21093, 21094, 21095, and 21151, Public Resources Code; *Sundstrom v. County of Mendocino*, (1988) 202 Cal.App.3d 296; *Leonoff v. Monterey Board of Supervisors*, (1990) 222 Cal.App.3d 1337; *Eureka Citizens for Responsible Govt. v. City of Eureka* (2007) 147 Cal.App.4th 357; *Protect the Historic Amador Waterways v. Amador Water Agency* (2004) 116 Cal.App.4th at 1109; *San Franciscans Upholding the Downtown Plan v. City and County of San Francisco* (2002) 102 Cal.App.4th 656.

Mitigation Measures

AQ-1:

- Disturbed soil areas will be watered at least twice daily to manage dust emissions.
- Vegetative cover will be planted as soon as construction activities allow.
- Straw and non-toxic tackifier will be applied to disturbed areas after seeding with grasses.
- Inactive storage piles that are susceptible to wind erosion will be covered.
- Construction exits will be rocked to reduce soil trackout by vehicles.
- Title 13, California Code of Regulations, section 2485 and 2449, limits the diesel engine idle time to five minutes for commercial vehicles exceeding a gross vehicle weight rating of 10,000 lbs, and off-road vehicles exceeding 24 horsepower. Signs referencing this restriction will be posted at the construction entrances.
- All construction equipment will be in good running condition and tuned to the manufacturer's specifications.

BR-1:

- All construction workers will undergo environmental awareness training. The training will provide the workers with information for all special status species that may be found in or around

the project site. The training will assist the workers in identifying and avoiding the special status species.

- A biological monitor will be on-site daily during construction activities to monitor for the presence of special status species. If species are found, the monitor will secure the site around the species and contact CDFW if the species is unable or unwilling to exit the work area under its own volition.
- Before construction activities begin, the project site will be inspected for special status species. CAFW will be immediately notified of any special status species that are identified during the survey.

BR-2:

- If construction activities occur during February 15 – August 31, then the project area will be surveyed for nesting migratory birds and protected raptors within the 15 days preceding the commencement of construction activities. The survey will extend out to 0.5 mile from the project site for Swainson's hawks. CDFW will be notified of the survey results before construction activities begin.

BR-3:

- Before construction activities commence, temporary orange fencing will be placed around all elderberry shrubs with a stem diameter of 1 inch or greater that are located within the project area. The fencing will be placed at least 20 feet from the shrubs dripline, and sign placement and wording will be consistent with the United States Fish and Wildlife Service's (USFWS) Conservation Guidelines for the Valley Elderberry Longhorn Beetle.

BR-4:

- The work area will be isolated from flowing water during in-water construction activities. A fish rescue will be performed immediately after the work area is isolated from flowing water.

BR-5:

- Project work requires permits from CDFW, USFWS, USACE, and the California Central Valley Regional Water Quality Control Board. The project will adhere to these permits, which include avoidance and minimization measures to reduce impacts to fish, wildlife, and natural resources.

CR-1:

- The project requires grading and excavation. If any object of potential cultural resource significance is unearthed, then the work area will be secured until qualified personnel can evaluate the object.

HHM-1:

- A minimum of two spill kits (20 Gallon minimum) must be onsite at all times during construction activities. Each kit must be placed within a conspicuous container, and one kit must be located within 150 feet of the primary work area, and one kit must be located at the equipment staging and refueling area.

HHM-2:

- All construction equipment with an internal combustion engine must be equipped with a fire extinguisher (2 lbs. minimum capacity, w/ ABC rating).
- A minimum of two fire suppression kits must be onsite at all times during construction activities. Each kit must be placed within a conspicuous container located within 150 feet of the primary work area, and where the risk of fire is greatest. Each kit will contain one 5 lbs capacity fire extinguisher (ABC rating), two full size round point shovels, and two full size Mcleod rakes.
- All off-road, stationary, or portable construction equipment with internal combustion engines meet SAE Standard J335 or USDA Forest Service Specification 5100-1 for spark arresters.

N-1:

- The project's construction activities occurring within the City of Winters General Plan Area will be limited to weekday's from 7AM-7PM. Work outside of the General Plan Area may extend to 8AM-5PM on Saturdays.

- The project will not require the use of equipment that is likely to exceed 90 db at 50 feet (U.S. Department of Transportation, Federal Highway Administration, 2015).

REFERENCES

- BSK Associates, 2014. Draft Ordinary High Water Mark Determination and Preliminary Wetland Delineation, Lower Putah Creek Restoratio Project, Upper Reach Program, Solano and Yolo Counties, California.
- CA Dept. of Conservation. (2015). Retrieved from <http://www.quake.ca.gov/gmaps/WH/smaramaps.htm>
- CA Dept. of Conservation, Farmland Mapping and Monitoring Program. (2015). Retrieved from <http://www.conservation.ca.gov/dlrp/fmmp/Pages/Index.aspx>
- CA Dept of Conservation, Geological Survey of CA. (2015). Retrieved from <http://www.conservation.ca.gov/cgs/Pages/Index.aspx>
- CA Dept. of Education. (2015). Retrieved from <http://www.cde.ca.gov/re/sd/>
- CA Dept of Toxic Substance Control. (2015). Retrieved from <http://www.dtsc.ca.gov/>
- CA Dept of Transportaion. (2004). Transportation and Construction Induced Vibration Guidance Manual. Retrieved from <http://www.dot.ca.gov/hq/env/noise/pub/vibrationmanFINAL.pdf>
- CA Dept. of Transportation, CA Scenic Highway Program. (2015). Retrieved from http://www.dot.ca.gov/hq/LandArch/scenic_highways/scenic_hwy.htm
- CA Dept. of Transportation, Division of Aeronautics. (2015). Retrieved from <http://www.dot.ca.gov/hq/planning/aeronaut/documents/maps/index.htm>
- CA Environmental Protection Area, Air Resources Board. (2015). Retrieved from <http://www.arb.ca.gov/homepage.htm>
- CA Fish and Wildlife. CA Natural Diversity Database. (2015). Retrieved from <http://www.dfg.ca.gov/biogeodata/cnddb/>
- City of Winters General Plan Policy Document. (1992). Retrieved from <http://www.cityofwinters.org/pdf/GeneralPlan.pdf>
- National Marine Fisheries Service. (2015). Retrieved from <http://www.fisheries.noaa.gov/index.html>
- Recology Hay Road. (2015). Retrieved from <http://www.recologyhayroad.com/>
- Treamaine, K. (2015). Draft Cultural Resources Inventory Report for the NAWCA 3 Lower Putah Creek Floodplain Restoration Project.

U.S. Dept of Agriculture, Natural Resources Conservation Service. (2015). Retrieved from
<http://websoilsurvey.sc.egov.usda.gov/App/HomePage.htm>

U.S. Department of Transportation, Federal Highway Administration. (2006). Construction Noise
Handbook. Retrieved from
http://www.fhwa.dot.gov/environment/noise/construction_noise/handbook/handbook09.cfm

Yolo-Solano Air Quality Management District Online. (2015). www.ysaqmd.org

Appendix

Draft Cultural Resources Inventory Report for the NAWCA 3 Lower Putah Creek Floodplain Restoration Project

ACTION OF
SOLANO COUNTY WATER AGENCY

DATE: June 11, 2015

SUBJECT: Amendment No. 2 to the Agreement with Yolo Resource Conservation District

RECOMMENDATION:

Authorize Interim General Manager to execute Amendment No. 2 to the Agreement with Yolo Resource Conservation District to assist the Coordinating Committee with implementation of the Westside Integrated Regional Water Management Plan (Westside IRWMP).

FINANCIAL IMPACT:

Increase contract amount by \$12,380.22 from \$25,525.79 to \$37,906.01. There is adequate funding in the current budget for this expense.

BACKGROUND:

The Yolo Resource Conservation District assists the Coordinating Committee with implementation of the Westside IRWMP. Assistance includes developing meeting agendas, meeting notes, contacting stakeholders in the Region and gathering data.

The Water Agency Board of Directors adopted the Westside IRWMP at their July 11, 2013 meeting. The Westside IRWMP is managed through the Westside Sacramento Regional Water Management Group (RWMG), which consists of the Lake County Watershed Protection District, Napa County Flood Control and Water Conservation District, Solano County Water Agency and Water Resources Association of Yolo County. The RWMG agencies have assigned staff to a Coordinating Committee for day-to-day implementation of the Westside IRWMP.

Recommended: 
Thomas L. Pate, Interim General Manager

<input type="checkbox"/> Approved as recommended	<input type="checkbox"/> Other (see below)
--	--

Modification to Recommendation and/or other actions:

I, Thomas L. Pate, Interim General Manager and Secretary to the Solano County Water Agency, do hereby certify that the foregoing action was regularly introduced, passed, and adopted by said Board of Directors at a regular meeting thereof held on June 11, 2015 by the following vote.

Ayes:

Noes:

Abstain:

Absent:

Thomas L. Pate
Interim General Manager & Secretary to the
Solano County Water Agency

SOLANO COUNTY WATER AGENCY

AMENDMENT TO AGREEMENT FOR PROFESSIONAL SERVICES

AMENDMENT NUMBER: 2

CONTRACTOR: Yolo Resource Conservation District

EFFECTIVE DATE: June 11, 2015

PROJECT: Westside IRWMP Implementation Assistance

DESCRIPTION OF AMENDMENT:

1. Increase contract amount by \$12,380.22, from \$25,525.79 to \$37,906.01.

SIGNATURES:

Solano County Water Agency,
a Public Agency

Yolo Resource Conservation District

By: _____
Thomas L. Pate
Interim General Manager

By: _____
Giovanni Ferrendelli,
Chair, Board of Directors

ACTION OF
SOLANO COUNTY WATER AGENCY

DATE: June 11, 2015

SUBJECT: Purchase from Campbell Scientific of replacement water quality and monitoring equipment for PSC and NBA

RECOMMENDATION:


Authorize the Interim General Manager to execute a Purchase Order for replacement water quality and monitoring instrumentation for the Putah South Canal and North Bay Aqueduct.

FINANCIAL IMPACT:

The combined total cost of these purchases is \$30,578.94 without shipping. Adequate funding is available in the Agency’s current FY 2014-2015 budget.

BACKGROUND:

Presently, SCWA maintains an extensive water quality and monitoring network on the Solano Project and North Bay Aqueduct. The majority of instrumentation on these projects is between 8-10 years old and is no longer providing accurate and reliable information. This purchase is for the replacement of the turbidity, conductivity, and monitoring equipment on the Putah South Canal and the North Bay Aqueduct.

Recommended: 
Thomas L. Pate, Interim General Manager

☐ Approved as recommended ☐ Other (see below)

Modification to Recommendation and/or other actions:

I, Thomas L. Pate, Interim General Manager and Secretary to the Solano County Water Agency, do hereby certify that the foregoing action was regularly introduced, passed, and adopted by said Board of Directors at a regular meeting thereof held on June 11, 2015 by the following vote.

Ayes:

Noes:

Abstain:

Absent:

Thomas L. Pate
Interim General Manager & Secretary to the
Solano County Water Agency

ACTION OF
SOLANO COUNTY WATER AGENCY

DATE: June 11, 2015

SUBJECT: Flood Control Advisory Committee Appointment

RECOMMENDATION:

Approve appointing Steve Hartwig, Director of Public Works, City of Vacaville, to the Flood Control Advisory Committee as a representative of the Solano County Water Agency Advisory Commission. The appointment would take the place of the retired Rolf Ohlemutz.


FINANCIAL IMPACT:

None.

BACKGROUND:

The Flood Control Advisory Committee consists of eleven (11) members. Two (2) representatives are appointed by the Solano County Water Agency Advisory Commission, three (3) representatives of the Resource Conservation Districts and six (6) public members appointed by the Board of Directors of the Solano County Water Agency.

Rolf Ohlemutz has been a representative appointed by the Solano County Water Agency Advisory Commission for many years, and has served as the Chairman of the FCAC. Mr. Ohlemutz has retired from the Vallejo Sanitation and Flood Control District. Terry Riddle, representing Solano Resource Conservation District, has taken over as the Chairman. A new member to represent the Solano County Water Agency Advisory Commission is needed to replace Mr. Ohlemutz.

Recommended: 
Thomas L. Pate, Interim General Manager

☐ Approved as recommended ☐ Other (see below)

Modification to Recommendation and/or other actions:

I, Thomas L. Pate, Interim General Manager and Secretary to the Solano County Water Agency, do hereby certify that the foregoing action was regularly introduced, passed, and adopted by said Board of Directors at a regular meeting thereof held on June 11, 2015 by the following vote.

Ayes:

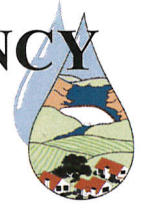
Noes:

Abstain:

Absent:

Thomas L. Pate
Interim General Manager & Secretary to the
Solano County Water Agency

SOLANO COUNTY WATER AGENCY



MEMORANDUM

Agenda Item No. 7

TO: Board of Directors

FROM: Thomas L. Pate, Interim General Manager

DATE: June 11, 2015

SUBJECT: June General Manager's Report

A handwritten signature in green ink, appearing to be 'T. Pate', is written over the 'FROM' line.

The month of May was budget preparation month for SCWA staff. Our budgets do not change a whole lot from year to year, but we do have some large projects, mostly funded by grants that do change yearly. Our financial status remains sound and we are executing the Board's past direction to expend our reserves on needed infrastructure projects. Even so, we have a healthy reserve that will allow much flexibility to address future needs.

The Water Agency has been awarded a \$467,000 US EPA Brownsfields grant through the Westside IRWMP. The Westside IRWMP Group is a regional collaboration of public agencies from Colusa, Lake, Napa, Solano, and Yolo County. The grant will be used to assess legacy mines in Cache and Putah Creek watersheds for mercury contamination cleanup. US Reps Thompson and Garamendi have extended accolades to the Agency and Group for this achievement, see attached press release.

The first meeting of the Strategic Planning Stakeholder Group was held on May 4. The Group reviewed 10 responses received from a Request for Qualifications for consulting services to assist with the Plan's development. Six were screened to provide proposals; staff will select the top two candidates for interview by the Group on July 27. The Group anticipates bringing a recommendation for services to the Board in August. The Group selected a patterned monthly meeting date of the fourth Monday each month beginning in July. The next meeting of the Stakeholder Group will be from 9:00 AM to 12 PM, July 27, 2015, at the County Administration Bldg., Room 6003, in Fairfield.



We will be canceling the July 9, 2015 Board meeting. The next regularly scheduled Board meeting will be August 13, 2015, preceding the City-County Coordinating Committee.

If you have any questions, please contact me at 455-1104 or tpate@scwa2.com.

Attachments

Jun2015.It7.mem (ID 159661)

Time Period Covered: May 2015

**REPORT OF CONSTRUCTION CHANGE ORDERS AND
CONTRACTS APPROVED BY GENERAL MANAGER UNDER
DELEGATED AUTHORITY**

Construction Contract Change Orders (15% of original project costs or \$50,000, whichever is less):

NONE

Construction Contracts (\$30,000 and less):

NONE

Professional Service Agreements (\$30,000 and less):

- Mann, Urrutia, Nelson, CPA's – Audit Services - \$21,500
- Bryce Consulting, Inc. – Salary Compensation Study – Amend: increase=\$800, new total compensation=\$7,400.

Non-Professional Service Agreements (\$30,000 and less):

NONE

Construction contracts resulting from informal bids authorized by SCWA Ordinance:

NONE

Note: Cumulative change orders or amendments resulting in exceeding the dollar limit need Board approval.

SOLANO COUNTY WATER AGENCY



MEMORANDUM

TO: Thomas L. Pate, Interim General Manager

FROM: Andrew Florendo, Water Conservation Coordinator

DATE: June 11, 2015

SUBJECT: Solano Water Efficient Landscape Rebate Program Update

In May, SCWA staff conducted 219 pre-inspections and 33 post-inspections including one commercial property. Since the Water Efficient Landscape (WEL) rebate program began in July, 2010 a total of 606 rebates have been issued, with the vast majority occurring since July 1, 2014 (See Figure 1). A total of 508,891 square feet of turf has been replaced with climate appropriate landscaping.

In the time period July 1, 2014 to May 31, 2015, 404 rebates have been disbursed (See Figure 2) for a total of \$327,544 on WEL rebates. That is broken down into \$311,688 for residential and \$15,856 for commercial accounts. The Water Agency has received or will receive approximately \$200,000 in Bay Area IRWMP Round 1 and Round 2 grant funding for the WEL rebate program. SCWA will also receive \$200,000 WEL rebate grant funding in the Bay Area IRWMP Drought Round. Additionally, as part of the Westside IRWMP Drought Round, SCWA will submit a grant proposal for \$225,000 in grant funding for the WEL rebate program.

As of June 1, there were a total of 516 sites, including 16 commercial properties in the WEL rebate program. We estimate about 50% will complete their project. Currently the WEL rebate program is being administered by a team of five Water Conservation Interns who work on the program part-time during the school year. Beginning the week of June 8, they will transition to full-time status and will conduct approximately 30 – 35 pre- and post-inspections daily.

Figure 1. Total Number of Water Efficient Landscape Rebates 7/1/2010 – 5/31/2015

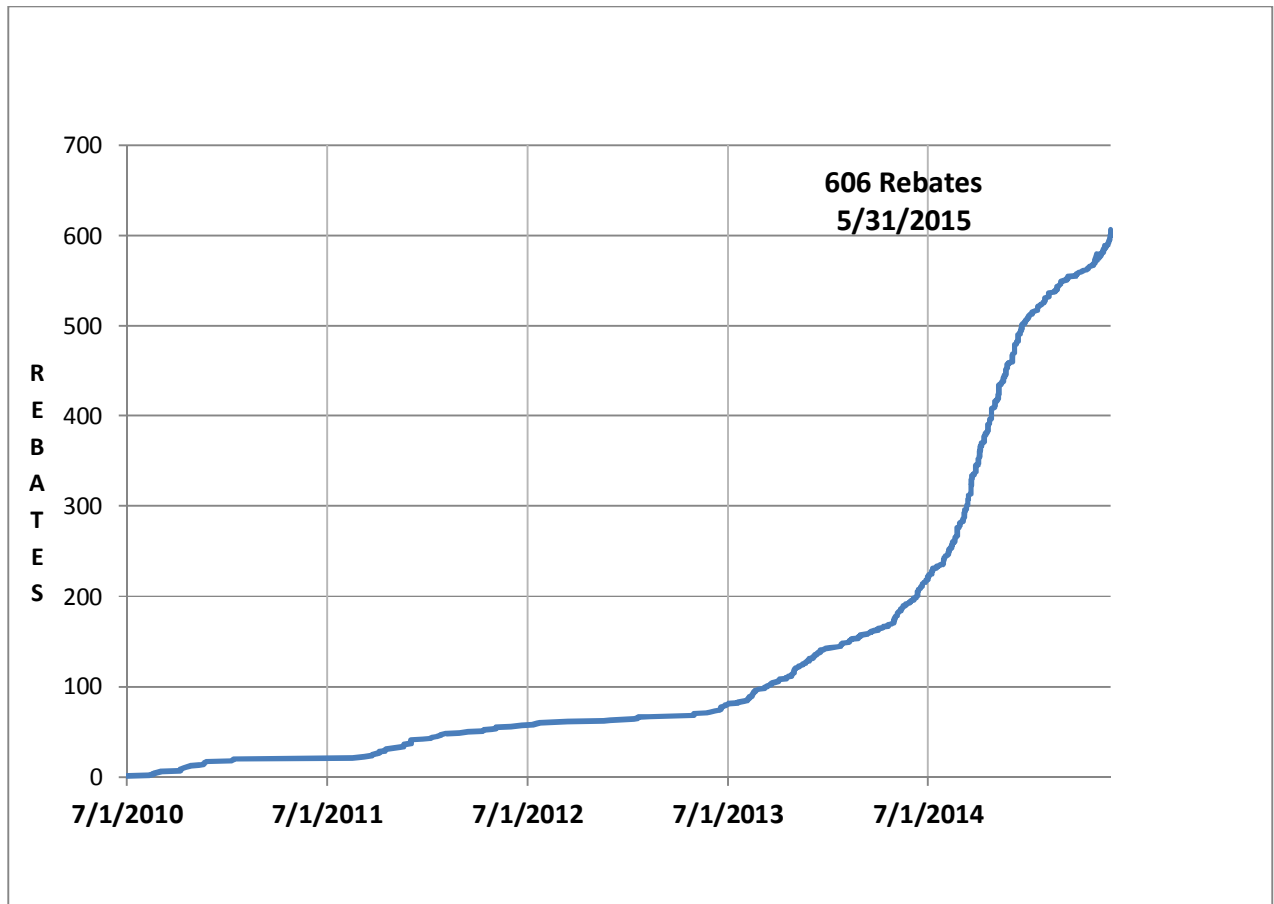
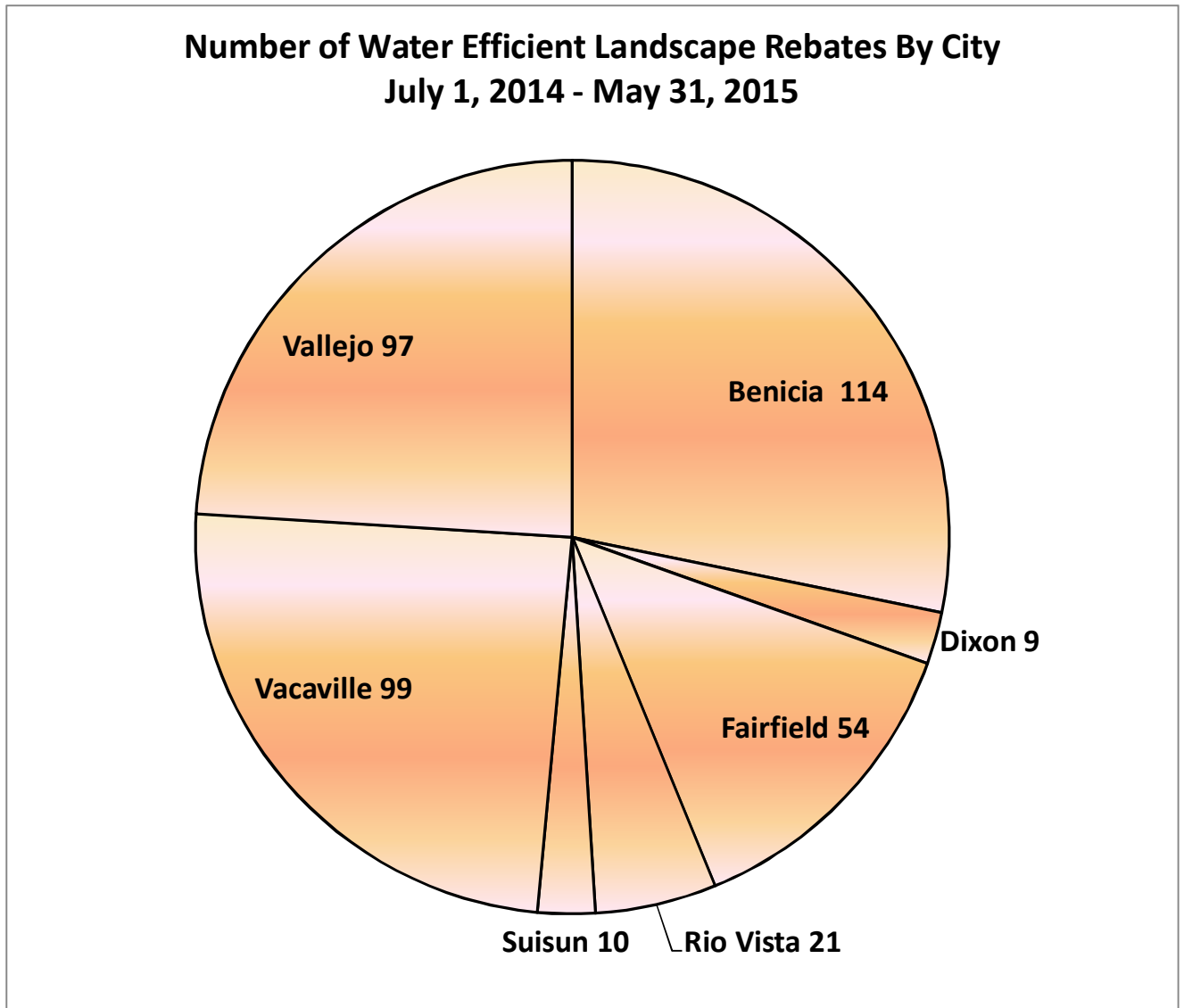


Figure 2. Number of Water Efficient Landscape Rebates By City





UNITED STATES ENVIRONMENTAL PROTECTION AGENCY
WASHINGTON, D.C. 20460

OFFICE OF
SOLID WASTE AND
EMERGENCY RESPONSE

May 28, 2015

The Honorable Harry Price
Board of Directors Chair
Solano County Water Agency
c/o City of Fairfield Mayor's Office
1000 Webster Street
Fairfield, CA 94533

Dear Mayor Price:

On behalf of the United States Environmental Protection Agency (EPA), I am pleased to congratulate you and confirm that the Solano County Water Agency was selected as one of the entities EPA will begin negotiations with to award a cooperative agreement for an assessment coalition grant. The Solano County Water Agency submitted an outstanding grant proposal, and we deeply appreciate the tremendous commitment of time and energy that went into its preparation.

Through the Small Business Liability Relief and Brownfields Revitalization Act of 2002, EPA is working to help states and communities around the country clean up and revitalize brownfield sites. We fully expect that these brownfield projects will provide benefits to the environment and economy of local communities. Noemi Emeric-Ford, your Regional Brownfields Coordinator, will work closely with the Solano County Water Agency to negotiate the cooperative agreement prior to the grant award. Please contact Noemi Emeric-Ford at 213-244-1821 or emerick-ford.noemi@epa.gov.

Again, congratulations on being selected! We look forward to working with you.

Sincerely,

A handwritten signature in dark ink, appearing to read "David R. Lloyd", is positioned above the printed name.

David R. Lloyd, Director
Office of Brownfields and Land Revitalization

cc: Noemi Emeric-Ford

 Select Language | ▼

Search



U.S. CONGRESSMAN

MIKE THOMPSON

REPRESENTING CALIFORNIA'S FIFTH DISTRICT

[About Mike](#)[Issues & Legislation](#)[Newsroom](#)[Constituent Services](#)[Fifth District](#)[Contact](#)[Home](#) » [Newsroom](#) » [Press Releases](#)

THOMPSON, GARAMENDI ANNOUNCE \$467,000 BROWNFIELDS EPA GRANT TO SOLANO COUNTY WATER AGENCY

May 28, 2015 | Press Release

Grant to assess contamination from abandoned mines in Lake, Napa, Solano, and Yolo counties

Washington, D.C. – U.S. Reps. Mike Thompson (CA-5) and John Garamendi (CA-3) today announced that the U.S. Environmental Protection Agency (EPA) has awarded the Solano County Water Agency, in collaboration with the Westside Sacramento Integrated Water Management Group, a \$467,378 federal grant to assess contamination from abandoned mines in Lake, Napa, Solano, and Yolo counties.

“Congratulations to the Solano County Water Agency and their partners on being awarded a brownfields grant that will help clean up abandoned land so that it’s safe and can be enjoyed by the public,” said Thompson. **“By revitalizing these deserted commercial properties, we can create open spaces, spur economic development, restore habitat and improve water quality.”**

“This grant gives our communities the tools needed to clean abandoned mines, improve local water quality, protect public health, and support local businesses. It will also help us enjoy the great

outdoors and strengthen Northern California's tourism industry," **said Garamendi**. "Thank you to the Solano County Water Agency and the Westside Sacramento Integrated Water Management Group for taking on this important work."

"EPA is committed to helping communities strengthen their local economy by cleaning up abandoned industrial and commercial properties – places where environmental cleanups and new jobs are needed most," said **Jared Blumenfeld, EPA's Regional Administrator for the Pacific Southwest**. "Solano County Water Agency and their coalition partners will use these funds to address abandoned mine properties that may be reused for open space, trails, and habitat restoration."

Specifically, the grant was awarded to Solano County to support work on the Westside Integrated Regional Water Management Plan (IRWMP). The plan was put together by the Westside-Sacramento Regional Water Management Group, a coalition of public agencies spanning Yolo, Colusa, Lake, Solano, and Napa County who have partnered to identify and address regional water resources opportunities and challenges for the areas within the Cache Creek and Putah Creek watersheds, including mercury contamination cleanup. The grant will fund the inventory of mine-scarred brownfields in these watersheds, conduct Environmental Site Assessments, and prepare site cleanup plans.

The coalition will assess and prioritize mine-scarred brownfields on private lands that may be revitalized for public benefit, including open space, trails, economic development, habitat restoration, and water quality improvement. Approximately 100 abandoned mines are located in the upper Cache Creek and Putah Creek Watersheds of the inter-coastal mountain range west of the Sacramento River in Lake, Napa, Solano, and Yolo counties.

Since the inception of EPA's brownfields program in 1995, cumulative program investments have leveraged more than \$22 billion from a variety of public and private sources for cleanup and redevelopment activities. This equates to an average of \$17.79 leveraged per EPA brownfield dollar expended. These investments have resulted in approximately 105,942 jobs nationwide. EPA's brownfields program empowers states, communities, and other stakeholders to work together to assess, safely clean up, and sustainably reuse brownfields sites.

More information on EPA's brownfields program: <http://www.epa.gov/brownfields/>

More information on the Solano County Water Agency: <http://www.scwa2.com/>

Congressman Mike Thompson is proud to represent California's 5th Congressional District, which includes all or part of Contra Costa, Lake, Napa, Solano and Sonoma Counties. He is a senior member of the House Ways and Means Committee. Rep. Thompson is also a member of the fiscally conservative Blue Dog Coalition and chairs the bipartisan, bicameral Congressional Wine Caucus.

ACTION OF
SOLANO COUNTY WATER AGENCY

DATE: June 11, 2015

SUBJECT: Water Agency Fiscal Year 2015-2016 Budget

RECOMMENDATION:

Approve the Solano County Water Agency Fiscal Year 2015-2016 Budget.

FINANCIAL IMPACT:

Not applicable.

BACKGROUND:

Staff will summarize each of the Agency funds at the Board meeting, highlighting major expenditures and changes from past years.

The budget includes a reallocation of SCWA reserve funds based on projections of cash available at the end of FY 2015-2016.

Recommended: Executive Committee

☒

Approved as
Recommended

☐

Other
(see below)

Modification to Recommendation and/or other actions:

I, Thomas L. Pate, Interim General Manager and Secretary to the Solano County Water Agency, do hereby certify that the foregoing action was regularly introduced, passed, and adopted by said Board of Directors at a regular meeting thereof held on June 11, 2015 by the following vote.

Ayes:

Noes:

Abstain:

Absent:

Thomas L. Pate
Interim General Manager & Secretary to the
Solano County Water Agency

**BUDGET
IMPLEMENTATION
ACTIONS**

ACTION OF
SOLANO COUNTY WATER AGENCY

DATE: June 11, 2015

SUBJECT: State Water Project Tax Rate for Fiscal Year 2015-2016

RECOMMENDATION:

Establish a tax rate of \$0.02 per \$100 of assessed valuation for the State Water Project property tax for fiscal year 2015-2016.

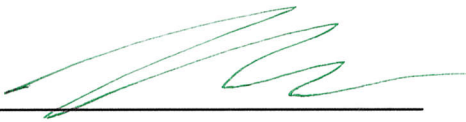
FINANCIAL IMPACT:

Projected revenues of \$10,139,122 in FY 2015-2016 Proposed Budget.

BACKGROUND:

The governing board of the Solano County Water Agency’s predecessor agency, the Solano County Flood Control and Water Conservation District, approved Resolution 85-183 that established a zone of benefit and a property tax rate not to exceed \$0.02 per \$100 assessed valuation. Starting with fiscal year 1986-87 the Water Agency has assessed a tax rate of \$0.02 per \$100 assessed valuation within the zone of benefit.

Pursuant to Revenue and Taxation Code Section 93, the Water Agency must establish the tax rate each fiscal year which is to be levied on the voter approved bonded indebtedness. The Board has the discretion to lower the tax annually, but not to increase it beyond \$0.02 per \$100 assessed valuation.

Recommended: 
Thomas L. Pate, Interim General Manager

<input type="checkbox"/> Approved as recommended	<input type="checkbox"/> Other (see below)
--	--

Modification to Recommendation and/or other actions:

I, Thomas L. Pate, Interim General Manager and Secretary to the Solano County Water Agency, do hereby certify that the foregoing action was regularly introduced, passed, and adopted by said Board of Directors at a regular meeting thereof held on June 11, 2015 by the following vote.

Ayes:

Noes:

Abstain:

Absent:

Thomas L. Pate
Interim General Manager & Secretary to the
Solano County Water Agency

ACTION OF
SOLANO COUNTY WATER AGENCY

DATE: June 11, 2015

SUBJECT: Cost of Living Adjustment for Water Agency Employees

RECOMMENDATIONS:

Award a 2% cost of living adjustment to Water Agency employees effective the payroll period starting July 5, 2015 as recommended by the Executive Committee.

FINANCIAL IMPACT:

The cost of a 2% COLA is approximately \$25,894 for FY 15/16. Funding for a 2% cost of living adjustments for employee salaries have been included in the Proposed FY 2015/2016 budget.

BACKGROUND:

Cost of living adjustments are discretionary on the part of the Board of Directors. This adjustment will apply to 14 Water Agency employees.

The U.S. Bureau of Labor Statistics publishes several indexes. In addition to the San Francisco-Oakland-San Jose index, there is a U.S. City Average (which includes all states and all cities), the West (which includes 13 western states) and the Los Angeles-Anaheim-Riverside index. The other indexes are available for other major metropolitan areas but are not applicable to our area.

Recommended: Executive Committee

☒ Continued on next page

<input type="checkbox"/> Approved as Recommended	<input type="checkbox"/> Other (see below)
---	---

Modification to Recommendation and/or other actions:

I, Thomas L. Pate, Interim General Manager and Secretary to the Solano County Water Agency, do hereby certify that the foregoing action was regularly introduced, passed, and adopted by said Board of Directors at a regular meeting thereof held on June 11, 2015 by the following vote.

Ayes:

Noes:

Abstain:

Absent:

Thomas L. Pate
Interim General Manager & Secretary to the
Solano County Water Agency

The last cost of living adjustment (2% percent) was granted in July 2014 (based on April 2013 indexes). During this time period the indexes changed by -0.2% to 2.4% (see table below):

<u>Area</u>	<u>April CPI</u> <u>2014</u>	<u>April CPI</u> <u>2015</u>	% Increase from April 2014 to <u>April 2015</u>
San Francisco-Oakland-San Jose	251.495	257.622	2.4%
U.S. City Average	237.072	236.599	-0.2%
The West	239.808	242.302	1.0%
Los Angeles-Anaheim-Riverside	242.437	243.569	0.5%

This information can be found at the following link:
<http://www.bls.gov/regions/west/cpi-summary/ro9xg01a.htm#ro9xg01blue1a.f.1>

The Agency has recently completed an updated salary survey for all employees. Recommendations will be brought to the Board after the new General Manager reviews the results.

ACTION OF
SOLANO COUNTY WATER AGENCY


DATE: June 11, 2015

SUBJECT: CONSULTANT SERVICES CONTRACTS AND RENEWALS

RECOMMENDATION:

Authorize Interim General Manager to execute agreements and amendments for the following consultant services for work through fiscal year 2015-2016:

- 1. Agrichem, Nuisance Vegetation Management, new contract- contract limit of \$31,744;
- 2. Blankinship & Associates, Inc., Compliance and Monitoring for Aquatic Pesticide Use, new contract - contract limit of \$47,000;
- 3. Byro Technologies LLC, NBA Biofilm Screening Tests, new contract – contract limit of \$67,320;
- 4. CH2MHILL, Solano HCP EIR/EIS, new contract -contract limit \$90,000;
- 5. Clean Lakes, Campbell Lake Algaecide Treatments, new contract-contract limit of \$86,040;
- 6. Erler & Kalinowski, Inc., Baseline Water Use Assessment, new contract – contract limit of \$55,000;
- 7. Eyasco, Inc., Data and Website Management, new contract- contract limit of \$214,660;
- 8. GHD, Solano County Commercial and Industrial Water Conservation, two year contract- contract limit of \$160,000;
- 9. GHD, Solano County Water Savings Incentive Program Administration, two year contract – contract limit of \$60,000;
- 10. IN Communications, High School Video Contest and Public Outreach, new contract – contract limit of \$30,000;
- 11. Iron Springs Corporation, Large Landscape BMP, new contract – contract limit of \$50,000;
- 12. LSA Associatesn Inc., Habitat Conservation Plan, new contract-contract limit of \$335,360;
- 13. Solano Resource Conservation District, Lake Berryessa Outreach, new contract-contract limit of \$85,000;

Recommended: 
Thomas L. Pate, Interim General Manager

☒ Continued on Next Page

☐ Approved as recommended ☐ Other (see below)

Modification to Recommendation and/or other actions:

I, Thomas L. Pate, Interim General Manager and Secretary to the Solano County Water Agency, do hereby certify that the foregoing action was regularly introduced, passed, and adopted by said Board of Directors at a regular meeting thereof held on June 11, 2015 by the following vote.

Ayes:

Noes:

Abstain:

Absent:

Thomas L. Pate
Interim General Manager & Secretary to the
Solano County Water Agency

14. Solano Resource Conservation District, Barker Slough Watershed Partnership, new contract – contract limit of \$50,000;
15. Solano Resource Conservation District, Suisun Marsh Education Program, three year contract – contract limit of \$137,500.
16. Southwest Environmental, Inc., high-efficiency toilet installation program, new contract - contract limit \$200,000;
17. Terraphase, Cache Slough Water Quality Monitoring, new contract- contract limit \$50,000;
18. Wildlife Survey & Photo Service, Solano Project Biomonitoring for Aquatic Invasive Species, new contract-contract limit of \$156,949;
19. Yolo Resource Conservation District, Westside IRWMP Implementation Assistance, new-contract-contract limit \$47,417.
20. ZunZun, Solano School Education Program, new contract- contract limit of \$35,000.

FINANCIAL IMPACT:

Funding for these consultants is included in the Fiscal Year 2015-2016 Budget.

BACKGROUND:

1. Agrichem will continue to provide herbicide application consultation for the Ulati and Green Valley Flood Control Projects.
2. Blankinship & Associates will continue to provide consulting service for compliance monitoring for application of aquatic herbicides. Program costs are shared with other districts.
3. Byro Technologies LLC will conduct laboratory screenings of the North Bay Aqueduct biofilm to help improve pipeline capacity.
4. CH2M Hill will continue the preparation of the Solano Habitat Conservation Plan EIR/EIS.
5. Clean Lakes, Inc. will conduct aquatic herbicide treatment and monitoring at Campbell Lake to protect North Bay Aqueduct water quality.
6. Erler & Kalinowski will develop a workplan to determine the effectiveness of SCWA rebate programs.
7. Eyasco will provide consulting services for document/file management, data and database management, and website management.
8. GHD will continue to administer a Commercial, Industrial and Institutional Water Conservation Program done in conjunction with the cities. This program identifies candidate facilities where water audits are done to improve water efficiency.
9. GHD will continue to administer the Water Savings Incentive Program. This program will offer rebates to commercial, industrial, and institutional accounts.
10. IN Communications will administer the Solano High School Video Contest and assist in public outreach.
11. Iron Springs Corporation will continue the Large Landscape BMP Program to set water budgets for commercial and institutional sites.
12. LSA Associates, Inc, will continue to develop the Solano Habitat Conservation Plan. Tasks include completing the Public Draft HCP and developing programmatic wetland permits.
13. Solano Resource Conservation District will provide public education and outreach for Lake Berryessa.
14. Solano Resource Conservation District will administer a grant program and work with local landowners in the Barker Slough Watershed to protect North Bay Aqueduct water quality.
15. Solano Resources Conservation District will educate sixth graders on the importance of water and the environment in Solano County.
16. Southwest Environmental will continue the Solano High-Efficiency Toilet installation program for commercial, industrial and institutional accounts.
17. Terraphase (previously ARCADIS) will continue to provide consulting service water quality monitoring and analysis of constituents of concern for the Cache Slough watershed.
18. Wildlife Survey and Photo Service will continue to monitor New Zealand Mud Snails, and for detection of Quagga and Zebra mussels in the Solano Project.
19. Yolo Resource Conservation District will assist the Coordinating Committee with administrative functions of the Westside IRWMP implementation.
20. ZunZun will continue to market, schedule and present interactive school assemblies for grades K-6 at Solano County schools.

Copies of agreements and amendments are available on the SCWA web page (www.scwa2.com) or from SCWA staff.

ACTION OF
SOLANO COUNTY WATER AGENCY

DATE: June 11, 2015

SUBJECT: Purchase new vehicle and backhoe.

RECOMMENDATION:

Authorize the Interim General Manager to execute a Purchase Order for the following:

- 1) Agency Fleet Vehicle (Chevrolet Tahoe).
- 2) Backhoe Loader (John Deere 710K).

FINANCIAL IMPACT:

The combined total cost of these purchases is \$216,204. Adequate funding is available and these purchases are programmed in the Agency’s Proposed FY 2015-2016 Capital budgets (Admin: \$37,860 and Ulatis Project: \$183,470).

BACKGROUND:

Agency Vehicle (\$37,860):
Presently, SCWA has two 4x4 vehicles that are shared among office staff and interns. These all purpose vehicles are used both on road (e.g., attending meetings) and off road (e.g., inspecting SCWA facilities). The vehicles are 2001 (Expedition) and 2006 (Colorado) model years with approximately 109,000 and 86,000 miles, respectively. The Expedition has surpassed the Agency’s vehicle replacement policy threshold of 10 years or 100,000 miles, and the Colorado is fast approaching this threshold. The Expedition has become less than reliable and will be relegated to auxiliary status for use as long as it remains cost effective to maintain for such status. SCWA proposes to purchase a new Chevrolet Tahoe to replace the Expedition as a primary vehicle. The Tahoe is of similar size and capacity as the Expedition, but the Tahoe has improved fuel efficiency, better safety ratings and features, and lower emissions.

Recommended: 
Thomas L. Pate, Interim General Manager

☒ Continued on Next Page

☐ Approved as recommended

☐ Other (see below)

Modification to Recommendation and/or other actions:

I, Thomas L. Pate, Interim General Manager and Secretary to the Solano County Water Agency, do hereby certify that the foregoing action was regularly introduced, passed, and adopted by said Board of Directors at a regular meeting thereof held on June 11, 2015 by the following vote.

Ayes:

Noes:

Abstain:

Absent:

Backhoe Loader (\$183,470):

SCWA currently owns a 1997 model year John Deere backhoe loader (Backhoe) with approximately 5,300 hours. The Backhoe is a versatile tool used to perform maintenance activities on the Ulatis Flood Control Project (UFCP) – a network of earthen drainage channels used to transport agricultural water and storm runoff. The Backhoe has surpassed SCWA’s heavy equipment replacement policy threshold of 15 years or 6,000 hours. In addition, the Backhoe’s performance and reliability have begun to decline in recent years. SCWA proposes purchasing a new backhoe loader. The existing one will be relegated to auxiliary status for use by other programs as long as it remains cost effective to maintain for such status. The new backhoe loader is the same model size (710) as the Backhoe, but the new machine has lower emissions, improved fuel efficiency, and increased power and performance. These purchases will also maintain our fleet average emissions requirement as we phase out older assets and replace with new modern low emission assets.

Staff recommends placing the order now (the current FY) for these items for delivery and payment in the next FY to reduce the wait time. These purchases have a long lead time (months) to receive.

ACTION OF
SOLANO COUNTY WATER AGENCY

DATE: June 11, 2015

SUBJECT: Putah South Canal Headworks Improvements

RECOMMENDATIONS:


Authorize Interim General Manager to execute an agreement with the lowest responsible bidder for the Putah South Canal Headworks Improvements & Modifications project.

FINANCIAL IMPACT:

Funding is designated in the Solano Project Rehabilitation and Betterment Program budget for Fiscal Year 2015-2016. Program funding is allocated in the Solano Project Capital Reserves. All of the construction will occur in Fiscal Year 2015-2016. The bids received range from \$1,199,215 to \$1,667,424. The Engineers Estimate for the Putah South Canal Headworks Improvements & Modifications project is \$1,501,090.

BACKGROUND:

The Putah Diversion Dam (PDD) and Lake Solano facility is located 7 miles downstream of Monticello Dam (Lake Berryessa). The purpose of the PDD facility is to divert water into the Putah South Canal and control water releases into Lower Putah Creek. At the PDD facility, before water is diverted into the Putah South Canal, water must pass through a large bay of screens at the Headworks, which screen out adult fish, trash, and aquatic vegetation from Lake Solano. Currently, the majority of the screens are cleaned by a manually operated screen cleaner with a small section cleaned by an old and dilapidated automatic screen cleaner. The screen cleaner system is often overwhelmed during the late spring and summer months primarily due to large amounts of aquatic vegetation. Furthermore, Dam Operators will often be required to come out to the PDD in the middle of the night to clean screens and restore flow to the Putah South Canal. Additionally, the existing automatic screen cleaner has exceeded its useful life span, is prone to failure, and spare parts are no longer available.

Recommended By: 
Thomas L. Pate, Interim General Manager

☒ Continued on next page

☐ Approved as Recommended ☐ Other (see below)

Modification to Recommendation and/or other actions:

I, Thomas L. Pate, Interim General Manager and Secretary to the Solano County Water Agency, do hereby certify that the foregoing action was regularly introduced, passed and adopted by said Board of Directors at a regular meeting thereof held on June 11, 2015 by the following vote:

Ayes:

Noes:

Abstain:

Absent:

Thomas L. Pate
Interim General Manager & Secretary to the
Solano County Water Agency

The Water Agency has determined from extensive studies, field tours, and a feasibility analysis that a Brackett® Bosker Raking Machine is the most effective automated screen cleaner for the PDD facility. Besides the automatic screen cleaner, the PSC Headworks Improvement Project will consist of significant electrical and structural upgrades to the PDD facility. The purpose of these upgrades is to support the new automated screen cleaner, upgrade the existing 60-yr old electrical system, improve site access, and improve drainage and settlement issues along the Diversion Dam embankments. The new automated screen cleaner and upgrades to the PSC Headworks and PDD facility will significantly improve Solano Project operations.

The purchase of the Brackett® Bosker Raking Machine, at a cost of \$746,150, was approved by the Board at the January 8, 2015 Board Meeting. The total purchase and construction cost of the project is approximately \$2,300,000. Once complete, the PSC Headworks Improvement Project is expected to reduce operations and maintenance (O&M) cost of the Solano Project. Staff will no longer be required to continuously operate the screen cleaner throughout the late spring, summer, and early fall months. Furthermore, overtime hours will be reduced as staff will no longer need to come out after hours to clean the screens. Besides O&M costs, the project will improve the reliability of the Solano Project. In the past, wintertime storm events as well as summertime dislodging of aquatic vegetation islands have overloaded the existing screen cleaner and reduced flows down the Putah South Canal. The new screen cleaner will be able to handle these large vegetation loads with little to no impact on Putah South Canal flows. Lastly, the project will address existing issues with the Putah Diversion Dam, such as soil settlement on the east side embankment which has led to cracking of the existing asphalt surface, breakage of electrical conduit lines, poor drainage, and shifting of the retaining walls.

The Board authorized advertisement of the Contract Documents for this construction work on April 9, 2015. Bid opening for the construction work occurred on June 2, 2015 with 10 responses received which are tabulated below. Staff is currently vetting the apparent low bidder and will make a final recommendation of award at the meeting. Construction is anticipated to start at the beginning of August.

Bid Results- June 2, 2015:

RANK	BIDDER	TOTAL BID PRICE
*1	Anderson Pacific Engineering Co., Inc.	\$1,199,215
2	Myers and Sons Construction, LP	\$1,232,016
3	Granite Rock Company	\$1,317,926
4	Disney Construction, Inc.	\$1,415,233
5	Valentine Corporation	\$1,418,368
6	Mountain Cascade, Inc.	\$1,460,829
7	Syblon Reid	\$1,475,906
8	SCWA ENGINEERING ESTIMATE	\$1,501,090
9	Clark Bros., Inc.	\$1,623,000
10	Western Water Constructors, Inc.	\$1,656,127
11	E. E. Gilbert Construction, Inc.	\$1,667,425

*Apparent low bidder